

June, 1954

THE BULLETIN

of the Tulsa County Medical Society

IN THIS ISSUE

Blue Cross-Blue Shield Plans Reflect
Progress In Annual Reports For 1953



Missouri Dean Speaks Here June 28th



A Guest Editorial By The Surgeon General
Of The United States Public Health Service



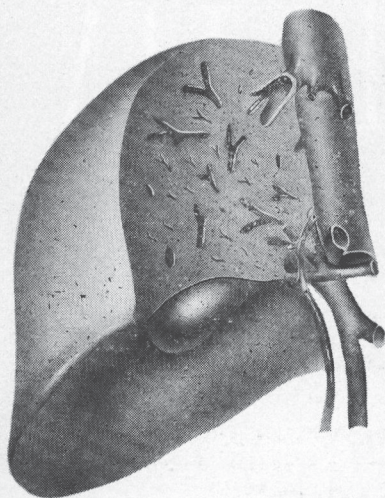
The Medical Library

Vol. 20

No. 6



normalize fat metabolism... protect the liver...



In your diabetic, cirrhotic, overweight and geriatric patients liver damage may be aggravated by dietary restrictions and other factors which reduce intake of lipotropics essential for liver protection.

LIPOCAPS and LIPOLIQUID provide the massive doses of choline and other important lipotropics needed to improve hepatic function, facilitate mobilization and transport of fat and curb fatty infiltration of the liver.

LIPOLIQUID

Each tablespoonful (15 cc.) contains:

Choline* (equivalent to 9.15 Gm. of choline dihydrogen citrate)	3.75 Gm.
Vitamin B ₁₂ U.S.P.	4.20 mcg.
Inositol	75.00 mg.

*As tricholine citrate.

Pint bottles.

Dosage: 1 to 2 tablespoonfuls daily for adults.

LIPOLIQUID is sugar- and alcohol-free.

LIPOCAPS[®]

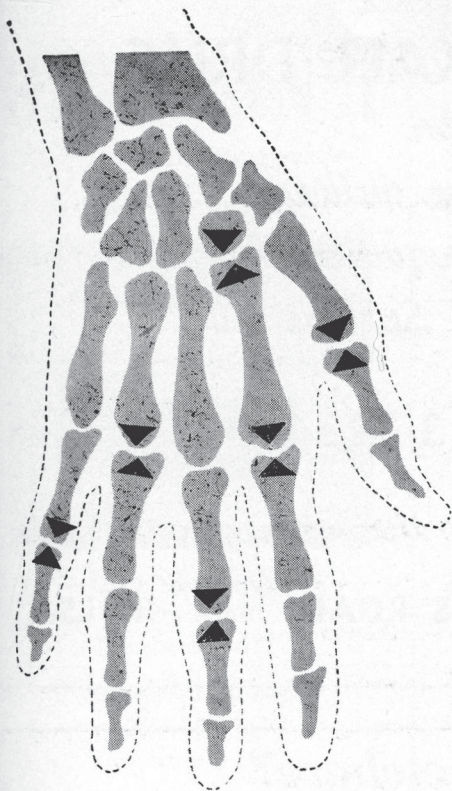
Each orange capsule contains:

Choline bitartrate	450 mg.
dl-Methionine	150 mg.
Inositol	100 mg.

Bottles of 100.

Dosage: One capsule three times daily.

*L*akeside laboratories, INC., MILWAUKEE 1, WISCONSIN



in
arthritis
and allied
disorders

Rapid Relief of Pain
usually within a few days

**Greater Freedom
and Ease of Movement**
functional improvement in a significant
percentage of cases

No Development of Tolerance
even when administered over
a prolonged period

BUTAZOLIDIN

(brand of phenylbutazone)



Its usefulness and efficacy substantiated by numerous published reports, BUTAZOLIDIN has received the Seal of Acceptance of the Council on Pharmacy and Chemistry of the American Medical Association for use in:

- Gouty Arthritis
- Psoriatic Arthritis
- Painful Shoulder (including peritendinitis, capsulitis, bursitis and acute arthritis)
- Rheumatoid Arthritis
- Rheumatoid Spondylitis

Since BUTAZOLIDIN is a potent agent, patients for therapy should be selected with care; dosage should be judiciously controlled; and the patient should be regularly observed so that treatment may be discontinued at the first sign of toxic reaction.

Descriptive literature available on request.

BUTAZOLIDIN® (brand of phenylbutazone), coated tablets of 100 mg.



GEIGY PHARMACEUTICALS

Division of Geigy Chemical Corporation
220 Church Street, New York 13, N. Y.
In Canada: Geigy Pharmaceuticals, Montreal

VERN REXALL DRUG

*for
Fast Free Delivery
for your patients
on the Sand Springs Line*

DIAL 3-3234

We'll do the rest

4902 SAND SPRINGS ROAD

TULSA

*Going Somewhere?
Travel Refreshed*



DRINK

Coca-Cola 5¢

REG. U.S. PAT. OFF.

BOTTLED UNDER AUTHORITY OF THE COCA-COLA COMPANY BY

GETMAN'S

ROY R. GETMAN, Founder



Store Number One
 MAIN & 6TH
 Telephone 3-6171

Store Number Two
 4606 EAST 11TH
 Telephone 9-5233

*As Near To You
 As Your Telephone*

RELIABILITY

Our experience of a quarter of a century as Tulsa's leading prescription drug store insures the most reliable compounding of your prescriptions.

Modern, fresh stocks of drugs accurately prepared by our staff of registered pharmacists.

FREE DELIVERY NIGHT AND DAY.

WE GIVE S & H GREEN STAMPS

Sponsors of the "Tell Me, Doctor" Radio Broadcasts at 5:15 P.M. each Monday through Friday, KTUL, prepared by The Oklahoma State Medical Association.

With The Editor . . .

Malpractice suits are on the upswing — three new ones reported in Tulsa County in the last ninety days . . . A total of 103 members of the Tulsa County Medical Society are taking part in the polio vaccine tests now being conducted — over 750 hours of free medical service . . . And a bow of thanks to Dr. David V. Hudson of the Tulsa City-County Health Department for an expert job of scheduling doctors and nurses for the project . . . Hillcrest Medical Center is mulling a deal to build an office building for physicians on its property East of the present main building . . . Philadelphia's brilliant cardiac surgeon, Dr. Robert P. Glover, has been set for the Tulsa County Medical Society meeting of Monday, November 8, 1954 . . . Dick Jurgens and His Orchestra were certainly a solid hit at the President's Inaugural Dinner Dance of the 1954 Annual Meeting of the Oklahoma State Medical Association in Oklahoma City last month . . . The Jurgens gang repeated their success of the 1951 Annual Meeting in Tulsa, and many enthusiastic dancers promptly invited them back again next year! . . . It had to happen: Tulsa's Dr. Safety First got a bid to appear on the New York TV show "What's In A Name?" . . . Moans Dr. Francis R. First of Checotah, brother of Safety: "They always remember Safety, but I'm just one of the crowd." . . . What's your hobby? . . . Jack Spears wants to know about yours — its for an upcoming article in The Bulletin about doctors and their pastimes . . . Give him a ring at 4-8161 . . . Selective Service is calling six Oklahoma doctors in June and July, including three from Tulsa . . . New inductees will probably be commissioned in the Navy . . . Dr. J. E. Wallace celebrates his 75th birthday this month, and still going strong after 47 years of active practice . . . Dr. Wallace recalls the going price for office calls back when he started in 1907 was \$1.00 . . . Another Tulsa pioneer, Dr. Fred S. Clinton, turned 80 last month . . . He is compiling notes of early Oklahoma history for future publication.

**angina pectoris
coronary occlusion
peripheral or pulmonary embolism**

'Paveril Phosphate'

(Dioxyline Phosphate, Lilly)

**relaxes vasospasm
increases exercise tolerance
lessens the frequency of pain**

SUPPLIED AS:

1 1/2-grain and 3-grain tablets

AVERAGE DOSE:

1 1/2 to 6 grains three or four times a day, before meals and at bedtime



ELI LILLY AND COMPANY, INDIANAPOLIS 6, INDIANA, U. S. A.

THE BULLETIN

 OF THE

TULSA COUNTY MEDICAL SOCIETY

 Wilkie D. Hoover, M.D., *President*

 Frank J. Nelson, M.D., *President-Elect*

 R. M. Wadsworth, M.D., *Vice-President*

 Charles G. Stuard, M.D., *Secretary-Treas.*

 Jack Spears, *Executive Secretary*

Vol. 20

TULSA, OKLAHOMA, JUNE, 1954

No. 6

BLUE CROSS PLAN ENROLLMENT INCREASES

Payments to Tulsa County Doctors by Blue Shield Plan in 1953 Total \$677,983.56. More Than Two Million Dollars Paid to State Physicians.

Members of the Tulsa County Medical Society were paid a record \$677,983.56 in professional fees by the Blue Shield Plan of Oklahoma in 1953, a study of the annual report of the prepaid surgical and obstetrical care service indicates. This sum represents 49.4 per cent of the total charges made to the patient. For the State as whole total Blue Shield payments to physicians amounted to slightly more than two million dollars, an increase of more than \$120,000 over 1952.

A breakdown of Blue Shield payments to Tulsa County doctors indicates \$548,974.58 was paid for surgical and obstetrical benefits, \$44,644.00 for the limited medical benefits, and \$84,364.98 for limited x-ray and anesthesia benefits. The Plan paid 50.9 per cent of the total surgical and obstetrical charges in Tulsa County, 44.4 per cent of medical charges, and 43.4 per cent of charges for anesthesia, x-ray, and radium therapy. For the State as a whole the Plan paid 51.3 per cent of surgical and obstetrical fees, 41.7 per cent of medical fees, and 43.4 per cent of anesthesia and x-ray fees. Total payments for the State amounted to 55.3 per cent of the fees charged the patient-policyholders. This would indicate that fees in Tulsa County are slightly higher than the general average over the State.

The Blue Cross Plan of Oklahoma, companion plan of prepaid hospital insurance to the Blue Shield, reported in its annual report for 1953 that member-

ship had once more begun to climb after a decline in 1952. The total membership of the Plan stood at 396,828 on December 31, 1953, an increase of 21,548 over the previous year. In 1952, the Plan had lost 8,499 subscribers net as cancellations exceeded new enrollments. Cancellations continue to pose a serious problem, however. Of 100,393 new Blue Cross enrollments in 1953, cancellations amounted to 78,845 or 78.5 per cent of the total new enrollments. Membership of the Blue Cross Plan in Tulsa County now stands at 128,581 or 51.1 per cent of the County population.

Membership in the Blue Shield Plan also showed a substantial gain, going from 280,675 in 1952 to 320,104 last year. Of 102,948 new enrollments, 61.7 per cent was recorded in cancellations. Blue Shield now has 107,676 members in Tulsa County or an all-time record of 42.8 per cent of the County population.

The Blue Cross Plan recorded a total income of \$5,311,114.18 in 1953. Of this sum 78.3 per cent was paid in benefits to policyholders, 7.6 per cent (a new all-time low) in operating expense, and 14.1 per cent to reserves. In Tulsa County, total payments to hospitals on behalf of policyholders in the County amounted to \$1,179,236.50, most of which went to the local hospitals. The utilization rate in Tulsa County is 89.4 per cent of income.

The financial situation of Blue Cross for 1953 represents a distinct improve-

ment over the previous year. The Plan had its first experience in 1953 with the \$3.00 per day co-insurance mechanism for controlling over-utilization of benefits by certain groups, and this has successfully acted as a brake upon the situation. As a result the Plan has been able to build up desirable reserves, something not possible in the last few years.

The average cost per case to Blue Cross in member hospitals was \$77.99 in 1953 or \$12.49 per case per day. The figures are roughly comparable for non-member hospitals. The Blue Cross payments represent 331,419 patient days. The average number of days per case was 6.3

Blue Cross paid for 7,853 babies in 1953 and since the opening of the Plan in 1940 has paid for 48,539 (to December 31, 1953). Adult females again proved to be the greatest users of the Plan—32.9 per cent of admissions utilizing 57.7 per cent of the total days of hospital care. Adult males accounted for 28 per cent of admissions and 24.8 per cent of total days of care. Among children, 20.3 per cent of minor males required 9.9 per cent of the total days of hospital care, while 18.8 per cent of minor females received 7.6 per cent of total days of hospital care.

In a study of Blue Cross admissions by diagnosis, diseases of the respiratory system (includes tonsillitis with tonsillectomy) ranked first followed in order by injuries and poisonings, diseases of the digestive system (including appendectomies and hernias), and pregnancy with delivery. In terms of total hospital days, however, diseases of the digestive system

ranked first, followed in order by pregnancy with delivery, diseases of the respiratory system, and diseases of the genito-urinary tract.

In the Blue Shield Plan utilization and reserves amounted to 87 per cent of income with the remaining 13 per cent going for operating expenses. The Blue Shield utilization rate for Tulsa County is 89.3 (virtually identical with the Blue Cross rate) and for the State as a whole 84.4 per cent.

The Blue Shield Plan also reported adult females as the greatest user of benefits with 37.9 per cent of paid cases following into this category plus an additional 8.6 per cent of paid cases representing obstetrical cases. Minor males came next with 21.4 per cent of paid cases, adult males third with 19.7 per cent, and minor females with 12.4 per cent ranking lowest.

The biggest slice of Blue Shield money went to obstetricians with 17.8 per cent of total payments being for normal deliveries and 2.3 per cent for Caesarian sections. Appendectomies came second in total costs, diseases and injuries of the bones, muscles and tendons third, and hysterectomies fourth.

Numerically, Blue Shield paid for 8,054 procedures resulting from injuries and diseases of the skin (including neoplasms), 6,132 deliveries, 4,736 tonsillectomies, 2,698 circumcisions, and 3,784 procedures resulting from bone, muscle and tendon injuries and diseases.

Copies of the Blue Cross and Blue Shield annual reports for 1953 are on file in the Library of the Tulsa County Medical Society, 1203 Medical Arts Building, and may be examined upon request.

Members of the Tulsa County Medical Society now serving on the Blue Cross Plan Board of Trustees include Dr. H. B. Stewart, Vice-President, Dr. James W. Kelley, and Dr. H. D. Murdock. Tulsa doctors on the Blue Shield Board are Dr. James Stevenson, Treasurer, and Dr. Ralph A. McGill.

MOVING YOUR OFFICE?

All physicians planning to move their offices within the next sixty days are requested to advise the Tulsa County Medical Society of their new office address and telephone number. The information will assist in preparation of the Annual Membership Roster to be published in a forthcoming issue of *The Bulletin*. Physicians desiring any change in their specialty listing in the roster should also notify the Executive Offices not later than June 15th.

DR. MARQUE O. NELSON was in attendance at the Rocky Mountain Dermatological Society at Wichita, Kansas, March 20-22.

DR. GOODWIN TO LEAD STATE ASSOCIATION

Dr. Bruce Hinson of Enid Assumes Office As President of Oklahoma State Medical Association. Annual Meeting Attracts Large Attendance.

Dr. R. Q. Goodwin, Oklahoma City internist, was named President-Elect of the Oklahoma State Medical Association at the annual meeting of the House of Delegates in Oklahoma City last May 9th. He will serve in 1955-56, succeeding Dr. Bruce R. Hinson, Enid general practitioner elected last year.

Other officers named by the Association included Dr. Clifford M. Bassett, Cushing, Vice-President; Dr. Clinton Gallaher, Shawnee, re-elected Speaker of the House of Delegates; and Dr. W. K. Haynie, Durant, re-elected Vice-Speaker. Tulsa's Dr. James Stevenson was re-elected to his fifth successive two-year term as Delegate to the American Medical Association, and Dr. E. H. Shuller of McAlester was named Alternate Delegate.

In inaugural ceremonies Dr. Hinson pledged continuation of the Association's present activities with emphasis upon public policy objectives and more widespread participation of individual members in Association affairs.

Over 750 Oklahoma doctors attended the Association's 61st Annual Meeting in Oklahoma City, May 10-12, with approximately 200 other exhibitors, guests, and staff personnel. Dr. Eugene S. Cohen of Tulsa appeared on the scientific program, and technical exhibits were displayed by Dr. James W. Kelley and Dr. Averill Stowell of Tulsa.

The 1955 annual meeting will be held in Tulsa at the Cimarron Ballroom with

tentative dates fixed for May 8-11.

Other actions of the House of Delegates included:

(1) Approval of an amendment to the By-Laws detailing in greater scope the procedure for handling of complaints before the Grievances Committee.

(2) Authorized appointment of a special committee to study the desirability of converting the Blue Cross-Blue Shield Plans from an indemnity to a service basis.

(3) Approval of a resolution submitted by the Tulsa County Medical Society which would permit members transferring from another State Association to receive credit for dues paid to that Association.

(4) Continued annual membership dues of the Association at \$42.00 per year plus the amount fixed by the American Medical

Association. The AMA dues are expected to continue at \$25.00 annually.

Tulsa County doctors elected to Life Membership in the Association were Drs. Paul Grosshart, W. J. Trainor, Bunn Harris, Charles E. Calhoun, Clarence C. Hoke, and James W. Rogers.

Dr. John E. McDonald of Tulsa, retiring President of the Association, was presented with a plaque in appreciation of his services.

Dr. Wilkie D. Hoover was reelected Councilor from Tulsa County (District 8) with Dr. Wendell L. Smith as Vice-Councilor.



DR. BRUCE R. HINSON

Guest Editorial

A Special Message

By Leonard A. Scheele, M. D.,
Surgeon General, U. S. Public Health Service



Life expectancy at birth has increased in the United States by 40 per cent—from 49 to 68 years—between 1900 and 1950. In the same period, life expectancy at the age of 50 years has increased by only 20 per cent. The average middle-aged American today can look forward to only four more years of life than his grandparents could anticipate in 1900.

This little-publicized fact contains the foremost contemporary challenge to Medicine. The longer average expectancy at birth connotes an increasing proportion of older people in our population. The short increase in expectancy for middle-aged people emphasizes the lack of effective medical means for the control of chronic diseases which strike with increasing frequency as age increases.

There are approximately 35 million Americans now 50 years of age or over. By 1960—just six years hence—there will be more than 42 million in the older age groups. Hence, we can anticipate a constantly rising demand for medical and related services for the victims of chronic illness, as well as for care of the elderly.

Diseases of the heart, blood vessels, and kidneys account for nearly one-third of the disabling illnesses among older people. Arthritis, tuberculosis, other diseases of the bones and joints, accidents, diabetes, cancer, and eye diseases account for the remaining major causes of long-term, disabling illness among persons in the older age groups.

Chronic illness imposes a heavy burden on the Nation's economy. Loss of many days of productive labor due to illness, for example, is a hidden cost of tremendous magnitude. It has been estimated that heart disease alone exacts a loss of 175 million man days annually, and that arthritis and rheumatism costs an additional 150 million days. In addition to the costs of maintaining older patients in public institutions and tuberculosis sanatoria, the taxpayers of this country spend nearly \$200 million annually in Federal, State, and local funds for medical and hospital care of the dependent aged.

Medicine has never before had such a wealth of effective tools for health care of older people. The challenge to physicians, therefore, is to extend the concept of prevention to the care of our aging population. Although we cannot at present prevent the onslaught of all cases of chronic disease, we can prolong life and make it more productive and happy through early diagnosis, treatment, and systematic medical supervision. We can prevent many of the fatal and disabling injuries through community programs against traffic and home accidents. We can prevent a large share of the prolonged and total disability resulting from the injuries and illnesses which occur despite our best efforts.

The general practitioner is responsible for the maintenance of individual and family health, as well as for medical care when sickness strikes. He is the individual who is in the best position to detect chronic disease in its earliest manifestations and to retard and stop its progress.

If the family physician's practice is to be more effective in the management of chronic disease, medicine must continue the quest for new knowledge. A major goal of medical research today is to develop additional simple, efficient, and inexpensive techniques for the diagnosis and therapy which the general practitioner can apply in his office.

Scientific advances of recent years assure us that medical research will equip medicine with better weapons for the struggle against chronic disease. New techniques will become available with increasing frequency as fresh discoveries are made and these new findings are tested and applied. We will ultimately gain a victory over the chronic diseases as decisive as the victory we have attained over so many infectious diseases within the past half century.

As we continue to support medical research, we can be sure that medicine will become increasingly better equipped to meet the challenge of chronic disease with a victory approaching the completeness of that we have attained in the struggle against the major infections over a period of a half century.

Sincerely,

Leonard A. Scheele

*Surgeon General
U. S. Public Health Service*

PRESIDENT'S PAGE

The press has recently levelled some criticism at the Grievances Committee of the Oklahoma State Medical Association for its refusal to make public the name of a physician suspended from membership for unethical practices. The press argues that such publicity would be in the best public interest as a measure of self-protection to the patient.

A physician's stock in trade is his reputation—both professional and personal—as well as his professional talents. Coincident with the necessity of maintaining that reputation upon a high plane is a tremendous responsibility to his patient. The individual doctor, being human and subject to human weaknesses, may in rare instances lose sight of that responsibility and resort to practices which discredit himself and his profession. Formal disciplinary action by his fellow practitioners through the medium of a Grievances Committee may serve to restore the culprit's professional integrity and return him as a useful servant to the sick and aged. Publicity given to the offense can serve only to permanently impair a professional career beyond salvage; frequently, the only future course for such unfortunate doctors is to turn to the renegade and undisciplined practices which victimize the patient through quackery and fraud. On the theory that everyone is entitled to an opportunity to rectify a first mistake, we would advocate measures which would rehabilitate the offender. If such offenses are repeated, then the Profession will join the press in spotlighting the culprit in the clear light of public opinion.

The press has suggested that the Grievances Committee revoke the license of offending physicians. This is not a prerogative of the Committee but one of a legal body, the Oklahoma State Board of Medical Examiners, which must make its decisions with respect to statutory law. Revocation of medical licensure is a difficult task and one not subject to mere wishes.

Sincerely,



President

WHEN SYMPTOMS ARE DISTRESSING BUT DISGUISED . . .

"It is strange," Malleeson says, "how little clinical recognition" has been given to the "negative behavior" or "endogenous misery" of the woman with endocrine imbalance. Largely accountable for this, of course, is the patient's own reluctance to discuss these symptoms with her physician until she actually suffers from some of the more obvious menopausal symptoms such as hot flashes. Even then she may become so accustomed to her change in feeling she can't remember what it's like to feel well.¹

Changes in the mood pattern are just a few of the many distressing symptoms of declining ovarian function which are so often disguised because they do not always coincide with cessation of menstruation, and at times will occur long before, and even years after. Other good examples are insomnia, headache, easy fatigability, arthralgia — and understandably so, when one considers that the loss of ovarian hormone "withdraws one of the most important metabolic regulators of the organism."²

"Premarin" is a preparation of choice for the replacement of body estrogen. "Premarin" presents a *complete* equine estrogen-complex and all the components of this complex are meticulously preserved in their natural form. This largely explains why "Premarin" not only produces prompt symptomatic relief but also imparts an important "plus" — the distinctive "*sense of well-being*" that patients find so highly gratifying. These benefits of "Premarin" have made it a natural estrogen widely prescribed by physicians . . . and often preferred by patients.

"PREMARIN"®



has no odor
. . . imparts no odor

Estrogenic Substances (water-soluble), also known as conjugated estrogens (equine), available in both tablet and liquid form

1. Malleeson, J.: *Lancet* 2:158 (July 25) 1953. 2. Goldzieher, M. A., and Goldzieher, J. W.: *Endocrine Treatment in General Practice*, New York, Springer Publishing Company, Inc. 1953, p. 23.

NEW YORK, N. Y.



MONTREAL, CANADA

5409

For Your Sickroom Needs

PRATHER'S MEDICAL ARTS SURGICAL SUPPLY OFFERS A COMPLETE SELECTION OF FINE PRODUCTS

- SURGICAL CORSETS AND SUPPORTS
S. H. Camp, Tru-Form, Akron
- ELASTIC HOSIERY
- CANES AND CRUTCHES
- POSTURE BELTS
- RUBBER GLOVES
- TRUSSES
- SYRINGES

*Courteous Service By Our Trained
Personnel — Lady Attendant*

Prather's

MEDICAL ARTS SURGICAL SUPPLY

In the Medical Arts Building

telephone 4-0121



THE MEDICAL LIBRARY

Library of the Tulsa County
Medical Society



Miss Irma A. Beehler, *Librarian*

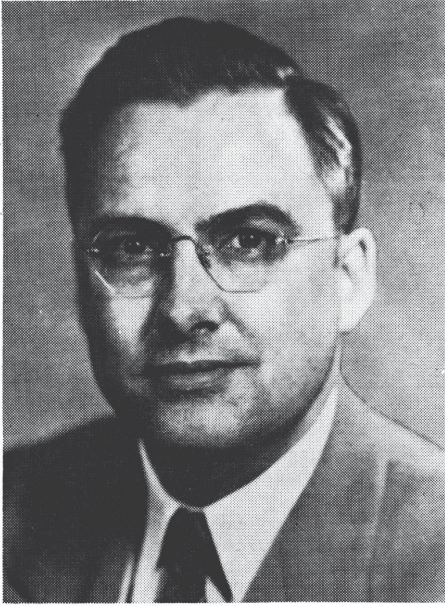
GIFTS OF THE MONTH—:

- Anonymous.** A contribution to the Medical Library Fund in memory of Mrs. Ida Lunsberg Nelson, mother of Dr. I. H. Nelson.
- Anonymous.** *Sexual Behavior in the Human Female*, by Alfred C. Kinsey, Clyde E. Martin, Wardell B. Pomeroy and Paul B. Gebhart. 842 pp., charts and bibliographies, W. B. Saunders Company, Philadelphia, Pennsylvania, 1953.
- Auxiliary to the Tulsa County Medical Society.** Supplemental pages to Tice's Practice of Medicine, Lewis' Practice of Surgery, and Brenneman's Practice of Pediatrics, 1954.
- Miss Irma A. Beehler.** In memory of Alfred G. Riggs: *Surgical Forum, the Proceedings of the Forum Sessions, Thirty-Eighth Clinical Conference of the American College of Surgeons, New York, N. Y., September, 1952.* 716 pp., illustrated, W. B. Saunders Company, Philadelphia, Pennsylvania, 1953.
- Blue Cross-Blue Shield Plans of Oklahoma.** Annual Reports for 1954. ³
- Dr. W. Carl Lindstrom.** *Surgery of the Ambulatory Patient*, by L. Kraefer Ferguson, with a chapter on fractures by Louis Kaplan. 923 pp., illustrated, J. B. Lippincott Company, Philadelphia, Pennsylvania, 1942.
- Physicians and Medical Assistants of the 11th Floor of the Medical and Dental Arts Building of Tulsa.** A contribution to the Medical Library Fund in memory of Mrs. Ida Lunsberg Nelson.
- The Staff of Nelson Clinical and Pathological Laboratories.** A contribution to the Medical Library Fund in memory of Mrs. Ida Lunsberg Nelson.
- Dr. James Stevenson.** *The Business Side of Medical Practice*, by Theodore Wiprud, Executive Director and Secretary of the Medical Society of the District of Columbia. Second Edition, 232 pp., illustrated, W. B. Saunders Company, Philadelphia, Pennsylvania, 1949.
- Tulsa County Heart Association.** The following volumes:
Cardiovascular Surgery, by Gerald H. Pratt. 843 pp., illustrated (part color), bibliographies, Lea & Febiger, Philadelphia, Pennsylvania, 1954. *Hypertension and Nephritis*, by Arthur M. Fishberg. Fifth Edition, enlarged and thoroughly revised. 986 pp., illustrated, bibliographies, Lea & Febiger, Philadelphia, Pennsylvania, 1954.
- Tulsa Dietetic Association.** *Diet Manual of the Oklahoma Dietetic Association.* 32 leaves, Oklahoma City, Oklahoma, 1953.

PUBLICATIONS BY MEMBERS OF THE TULSA COUNTY MEDICAL SOCIETY—:

- Dr. Ernest S. Kerekes.** *Prevention Of and Locating Misfiled Film Envelopes.* American Journal of Roentgenology, Radium Therapy and Nuclear Medicine, 71:881 (May) 1954.
- The first issue of the new publication entitled *Staff Proceedings of Hillcrest Medical Center*, Volume 1, Number 1, April, 1954, contains the following articles:
- Dr. James C. Peters.** *Comments on Rheumatic Heart Disease in the Adult*, pp. 1-3.
- Dr. Leo Lowbeer.** *Pathology of Rheumatic Disease*, pp. 4-12.
- Dr. Safety R. First.** *Electrocardiographic and Stethocardiographic Changes in Rheumatic Mitral Stenosis*, p. 13.
- Dr. Martin Leibovitz.** *Surgical Therapy in Mitral Stenosis*, pp. 14-17.

The Medical Library will not be open on Tuesday evenings during the summer months. Evening hours will be resumed in October.



MISSOURI MEDICAL SCHOOL DEAN TO SPEAK JUNE 28

Dr. Roscoe L. Pullen, Dean of the University of Missouri School of Medicine, Columbia, will be guest speaker for the Tulsa Academy of General Practice on Monday, June 28, 1954, at 6:30 P.M. at Hotel Tulsa. His subject will be "Trends Influencing Medical Practice."

All medical doctors are invited to attend the meeting. Dinner will be served at 6:30 P.M., and physicians should make reservations by telephoning the Academy offices at 2-5904. The scientific program will be at 8:00 P.M.

Dr. Pullen is one of America's best known specialists in endocrinology and infectious diseases. He attended A. B. Knox College and later received his medical degree from Northwestern University, Class of 1940. He interned at Charity Hospital, New Orleans, Louisiana, and then served a two year fellowship in endocrinology at Duke University School of Medicine, Durham, North Carolina. He returned to New Orleans in 1943 as Instructor of Medicine at Tulane University School of Medicine. In 1947 Dr. Pullen was appointed Associate Professor of Medicine at the University of Washington School of Medicine, Seattle, Washington, and remained there until 1949

when he again returned to Tulane as Professor of Medicine and Vice-Dean. In 1953 he was appointed to his present post as Dean of the University of Missouri School of Medicine.

Dr. Pullen is a diplomate of the American Board of Internal Medicine, fellow of the American College of Physicians, consultant to the Surgeon General of the United States Army, and member of several other medical organizations.

The June 28th meeting of the Tulsa Academy of General Practice will be the last for the organization until next Fall.

BLUE CROSS PLAN TO BEGIN NEW ANNUAL BILLINGS

The Blue Cross Plan has announced that the Tulsa County Medical Society's Physicians and Surgeons Group of Blue Cross Hospital Insurance will be placed on a new annual bill-direct basis beginning November 1, 1954.

The new billing arrangement substitutes an annual premium for the two semi-annual premiums now in effect. Bills will be rendered directly from the Blue Cross offices. Premium payments will no longer be made through the Tulsa County Medical Society offices but directly to the Blue Cross offices at 315 South Denver, Tulsa.

The final premium payment to be made through the Tulsa County Medical Society office will be a five-months premium due June 1, 1954. It is emphasized that the new annual bill-direct arrangement will not go into effect until November 1st.

The change-over in billing is part of a plan whereby all Oklahoma doctor-members are being consolidated into a new group representing the Oklahoma State Medical Association. Approval for transfer of the Tulsa County group to the new State group was authorized by the Board of Trustees of the Tulsa County Medical Society earlier this year.

Participants in the Industrial Medicine Symposium of the University of Oklahoma School of Medicine at Oklahoma City, May 20-21, included DR. WILKIE D. HOOVER, DR. THOMAS H. DAVIS, and DR. TOM HALL MITCHELL.

OFFICE SPACE

*in Julsa's
Newest and Most Modern
Shopping Center*

IDEAL LOCATION FOR CLINIC OR
DOCTOR'S OFFICES

Abundant Convenient Parking

All major store space leased by leading merchants. Lease this air conditioned space NOW and have it arranged and decorated to suit your needs.

Occupancy June 1, 1954

SHERIDAN VILLAGE SHOPPING CENTER

Admiral and Sheridan Streets

Telephone 4-1521

AMA SAN FRANCISCO MEET TO DRAW RECORD CROWD

The 103rd Annual Meeting of the American Medical Association will be held at San Francisco, California, June 21-25, 1954, with officials expecting a record attendance of physicians and guests.

The convention will include daily scientific sessions, motion pictures, color television presentations, scientific and commercial exhibits, the semi-annual meeting of the AMA House of Delegates, and related medical meetings of specialty groups. The Conference of Presidents and Other Medical Society Officers, public relations program, will be at the Palace Hotel on Sunday, June 20th.

Tulsans planning to attend include Dr. Wilkie D. Hoover, Dr. James Stevenson, Dr. John E. McDonald, and Dr. Hugh Perry.

Doctors desiring hotel accommodations should write the AMA Housing Bureau, 61 Grove Street, San Francisco, California. Each request must be accompanied by a deposit of \$10.00 per room. For best results physicians should use the hotel order blank found in the advertising pages of recent issues of *The Journal of the American Medical Association*.

GLASS-NELSON CLINIC PLANS NEW ADDITION

Plans for a new \$60,000 addition to Glass-Nelson Clinic of Tulsa were announced last month by Dr. Fred A. Glass.

The new unit will be 40 by 60 feet and will be at the north end of the present structure. Facilities to be provided by the addition will include a minor operating room, additional examination rooms, and new quarters for deep therapy x-ray units. A total of 14 rooms will be added.

The Clinic is also being air conditioned throughout. A parking lot, 60 by 100 feet, is being added at the west side of the building to supplement present parking facilities.

DR. R. M. SHEPARD attended the annual meetings of the American Trudeau Society and the National Tuberculosis Association at Atlantic City, New Jersey, May 14-15.

NEW MOBILE X-RAY UNIT PLACED IN LOCAL SERVICE

A new mobile x-ray vehicle has been placed into service in the Tulsa area by the Tulsa County Public Health Association as part of an improved program of tuberculosis case finding.

The new unit, owned by the United States Public Health Service, is housed in a gleaming white trailer built by the John Zink Company of Tulsa. It is powered by a GMC truck. The larger and more modern unit is already in service in the local area. It will operate six days a week instead of five as formerly.

The Tulsa County Public Health Association has also approved a budget of \$53,133.90 for the year ending March 31, 1955. This will cover the Association's education program, films, supplies, and other costs. The Association took 22,700 chest x-rays in 1953 and uncovered 144 cases of active tuberculosis.

SCIENTIFIC PAPERS SOUGHT

The Journal of the Oklahoma State Medical Association has issued an appeal for doctors to submit original scientific articles for publication. It was emphasized by Dr. Lewis J. Moorman, Editor, that all papers submitted are subject to approval by the Editorial Board.

Papers should be sent to the Editor, Journal of the Oklahoma State Medical Association, 1227 Classen Drive, Oklahoma City, and should be typed on white letter size paper, double-spaced, with carbon copy. Footnotes should be typed double spaced on a separate sheet of paper. Charts, illustrations, and photographs should accompany papers where possible.

DR. JOHN F. BLANKENSHIP has completed his internship at Hillcrest Medical Center and is now associated with DR. LOGAN A. SPANN in general practice. Another Hillcrest intern, DR. W. DEAN HIDY, will join DR. LOWELL L. STOKES of Tulsa at the conclusion of his internship on July 1st.

DR. and MRS. HORACE H. PORTER sail June 30th from New York for a two months tour of Europe.



whole-root Raudixin:

safe, smooth, gradual reduction of blood pressure

Raudixin is the most-prescribed of rauwolfia preparations. It is *powdered whole root* of *Rauwolfia serpentina*—not just one alkaloid, but all of them. Most of the clinical experience with rauwolfia has been with Raudixin.

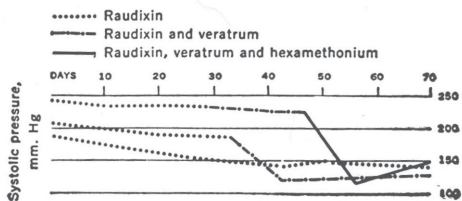
"A sense of well-being, decrease in irritability, 'improvement in personality'

and relief of headache, fatigue and dyspnea" are frequently described by patients.¹

Raudixin is base-line therapy. In mild or moderate cases it is usually effective alone.

50 and 100 mg. tablets, bottles of 100 and 1000.

Raudixin alone and combined with other hypotensive agents



Raudixin

Squibb rauwolfia

SQUIBB

1. WILKINS, R. W., AND JUDSON, W. E.: NEW ENGLAND J. MED. 248:48, 1953.

*RAUDIXIN® IS A TRADEMARK

Prescription Excellence

Our reputation for the best in prescription compounding is your guarantee of reliable, courteous, and attractively priced service for your patient. We use only the finest in modern fresh drugs and insist upon individual attention to every prescription by our registered pharmacists. For prompt service just telephone 72-2469.

PROFESSIONAL DRUG SHOP

2110 South Utica

D. L. KINCAID
(Kinney)

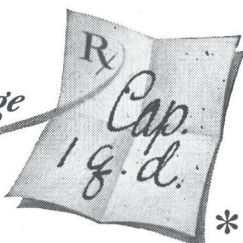
WE DELIVER

RAYMOND EWERS

Pronemia

recommended dosage

for pernicious anemia
and all treatable anemias



Vitamin B₁₂ • Iron • C • Stomach • Folic Acid • Purified Intrinsic Factor Concentrate

a new and potent oral hematinic
one capsule daily meets the needs of the average patient

*Formula contains
all known essential
hemopoietic factors:*

Purified Intrinsic Factor Concentrate.....	10 mg.	Ferrous Sulfate Exsiccated.....	400 mg.
Vitamin B ₁₂	30 mcg.	Ascorbic Acid (C).....	150 mg.
Powdered Stomach.....	200 mg.	Folic Acid.....	4 mg.

LEDERLE LABORATORIES DIVISION *AMERICAN Cyanamid COMPANY* Pearl River, N. Y.



*REG. U.S. PAT. OFF.

Notes Of An Executive Secretary

As any Executive Secretary of a Medical Society can tell you, there are some days when it doesn't pay to get out of bed.

After one of "those" days I'm tempted to borrow the title of one of Carter Dickson's better novels and letter it on my office door — The Department of Queer Complaints.

The day starts innocently enough with a telephone call. A sweet young thing is on the line. "My Club thinks it would be a nice way to raise money if it sponsored a health check-up clinic," she says. "We thought we would sell tickets for a dollar, each entitling the holder to a free health check-up. Do you think the Medical Society could get twenty doctors to donate a day of their time to our project?" I didn't think so, and fifteen minutes and 22,000 words later she still didn't see why it wasn't a bully idea. Oh, yes — the Club was raising money to go to Chicago to be on Don McNeill's Breakfast Club.

Its a man next time. Would the Tulsa County Medical Society like to buy a framed picture of General Douglas MacArthur to hang in each member's waiting room?

The next lady was worried. She was convinced that her surgeon hadn't really taken out her appendix last month. What he had really done, she said, was to deliver by Caesarean section a set of twins and sell them to a childless couple. Would the Medical Society pay for a private detective to trace down the missing twins? Curious, I checked — she was under the care of a psychiatrist and had a past history of institutional care. Childless herself, she had constant delusions of being pregnant.

"Say, chum," says the next guy on the telephone, "what did the doctors charge Arthur Godfrey for his hip operation?" How should I know?

The next visitor wore cowboy boots. "I'm an inventor," he said, "and I have

invented a new kind of fireproof cloth. However, the German and French cartels stole my formula. Do you reckon the doctors would loan me the money to bring a lawsuit against them cartels?" I didn't reckon so and said so. The Texas inventor wasn't giving up that easily. Out from his pocket came a long roll of cloth, which he quickly touched off with a match. A big burst of flame seared the paint on my desk before the cloth fell in ashes. "I must have got too much formula on that piece," says Texas sheepishly. By that time I had him headed for the door.

A grumpy old man is next on the telephone, complaining that his druggist wouldn't refund the price of the unused part of the prescriptions accumulated in his medicine chest. Could I help coerce the druggist? I couldn't. "You're in league with them" says Grumpy in a farewell blast.

A young woman visits me. Her mother is dying of cancer and physicians say there is no hope. She has heard of a new cancer cure which comes in a bottle. Could I tell her where to buy it? I try to tell her that its a ghoulish fraud. "It couldn't hurt any-

FOR RENT

An attractive physician's suite, four examining rooms, laboratory, and reception room. Carpeted, tile linoleum, newly decorated. Completely air conditioned. Located in the heart of Brookside in modern building occupied by doctors and dentists. For information telephone 7-7505 or visit

BROOKSIDE PROFESSIONAL BUILDING

3505 South Peoria

thing to try, could it?" she whispers as she leaves. I know that somehow, some way she will find the road to the cancer quack she seeks.

The next fellow is quite cheerful in a macabre sort of way. "I want to sell my body for scientific research," he says. "Need the money now," he adds. Appears very disappointed that I don't know of a local market for his cadaver.

"My doctor went to sleep while taking my pulse," says the next man on the phone. "Do I have to pay for the call?"

A letter in the afternoon mail: "Gentlemen: When I cough my prostate hurts. Should I see a lung specialist or a urologist?" This one I forward to the AMA for Tonics and Sedatives.

Just before 5:00 P. M. a big fellow with a dirty look comes in to see me. "I write Letters to the Editor," he says. "If you could put me on a monthly retainer of, say \$50.00, I could write some mighty nice letters about you doctors." I told him the budget wouldn't stand his retainer. "O.K.," he says, "but the Editor is going to get some mighty nasty letters about you doctors."

Some days it just doesn't pay to get out of bed.

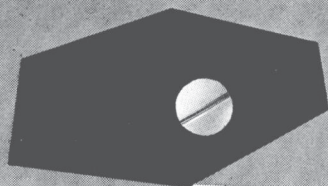
REREGISTRATION FEE DUE

Members of the Tulsa County Medical Society are reminded that their 1954 Annual Reregistration Fee of \$3.00 is due and payable to the Oklahoma State Board of Medical Examiners on or before June 10, 1954. Physicians should return their fee with the form notices mailed by the Board of Medical Examiners. Failure to make payment as required by Oklahoma statutory law may result in suspension or cancellation of licensure.

DR. ROGER Q. ATCHLEY has returned from a tour of South America with several thousand feet of beautiful motion pictures.

DR. WILLIAM C. ALSTON, JR. has taken attractive new professional quarters at 811 Medical Arts Building, Tulsa, for the practice of General Surgery.

DR. VANCE LUCAS attended the 1954 Annual Meeting of the American Association of Thoracic Surgeons, May 3-5, at Montreal, Canada.



A **NEW** tranquilizer-antihypertensive combination, especially for moderate and severe essential hypertension...

T. M.
Serpasil-Apresoline[®]
 hydrochloride

(RESERPINE AND HYDRALAZINE HYDROCHLORIDE CIBA)

COMBINING IN A SINGLE TABLET: The tranquilizing, bradycrotic and mild antihypertensive effects of Serpasil, a pure crystalline alkaloid of rauwolfia root. The more marked antihypertensive effect of Apresoline and its capacity to increase renal plasma flow.

Each tablet (scored) contains 0.2 mg. of Serpasil and 50 mg. of Apresoline hydrochloride.

C I B A
 Summit, N. J.

PORTRAIT OF DR. MacKENZIE UNVEILED AT HILLCREST

An oil portrait of the late Dr. Ian MacKenzie of Tulsa was unveiled in ceremonies at Hillcrest Medical Center on May 6, 1954. The painting was purchased by fifty close friends and patients of the popular orthopedic surgeon who died last October from injuries received in an automobile accident. It will hang at the Center's admissions desk as a permanent memorial.

The portrait was painted by Benjamin Danger, prominent New York artist, from photographs. Dr. W. J. Bryan was Chairman of the Memorial Committee.

Dr. MacKenzie founded the Polio Division at Hillcrest eight years ago and continued as its Medical Director until his resignation late in 1952.

DR. JOHN F. GORRELL has been ill at Hillcrest Medical Center.

DR. DAVE B. LHEVINE has returned from three months of postgraduate study in nuclear medicine at Mount Sinai Hospital, New York, N. Y., and the Oak Ridge Institute, Oak Ridge, Tennessee.

DR. THOMAS L. OZMENT, ophthalmologist, has joined the staff of Springer Clinic.

Members of the Tulsa County Medical Society lecturing to the interns and residents of St. John's Hospital last month included DR. CHARLES E. BRIGHTON, DR. E. N. LUBIN, DR. C. S. LEWIS, JR., and DR. W. CARL LINDSTROM.

Speakers for the Polio Vaccine Educational Program before Tulsa P-TA groups last month included DR. EDWARD L. MOORE, DR. RALPH F. MARTIN, DR. DAVID V. HUDSON, DR. ROBERT D. GRUBB, DR. WILLIAM J. OSHER, DR. EMIL M. CHILDERS, DR. H. J. RUBIN, and DR. T. PAUL HANEY.

DR. JOE E. TYLER has been elected President of the Oklahoma Association of Neurologists and Psychiatrists. Named to the Executive Board was DR. PAUL C. BENTON.

DR. WORTH M. GROSS has been named to the Industrial Medicine Committee of the Tulsa County Medical Society.

AN EFFECTIVE TRANQUILIZER-ANTIHYPERTENSIVE,
ESPECIALLY IN MILD, LABILE ESSENTIAL HYPERTENSION....

Serpasil^{T.M.}
(RESERPINE CIBA)

*A pure crystalline alkaloid of rauwolfia root
isolated and introduced by CIBA*

Virtually every patient with essential hypertension can benefit from the tranquilizing, bradycrotic and mild antihypertensive effects of Serpasil therapy.

Mg. per mg., Serpasil has a therapeutic effectiveness ratio of approximately 1000 to 1 compared with the whole root. Tablets, 0.25 mg. (scored) and 0.1 mg.

C I B A
SUMMIT, N. J.

Since 1916 . . .

al MUSICK DRUG

NORTH AND WEST

Store Number One

529 NO. DENVER

Telephone

54-7288

||
City-Wide Delivery
||

NORTH AND EAST

Store Number Two

545 E. APACHE

Telephone

3-3003

JUNE MEDICAL CALENDAR

TUESDAY, June 1st:

Blue Cross Hospital Insurance, Physicians & Surgeons Group, semi-annual premiums due and payable on this date at the Tulsa County Medical Society offices, B9 Medical Arts Building, Tulsa. Final date for payment, June 10, 1954.
 Congenital Heart Disease Clinic, Tulsa County Heart Association, Hillcrest Medical Center Outpatient Department, 8:00 A.M.
 St. John's Tumor Clinic, 8:00 A.M.

WEDNESDAY, June 2nd:

Adult Heart Clinic, Tulsa County Heart Association, Hillcrest Medical Center Outpatient Department, 8:00 A.M.
 St. John's Isotope Clinic, St. John's Hospital, 8:30 A.M.
 Interns and Residents Lecture, St. John's Hospital, 7:00 P.M. Subject: "Maternal Iso-immunization and Erythroblastosis." Speaker, Dr. Luvern Hays.

FRIDAY, June 4th:

St. John's Tumor Clinic, Clinical Conference, 8:30 A.M.
 Adult Heart Clinic, Tulsa County Heart Association, Hillcrest Medical Center Outpatient Department, 8:00 A.M.
 St. John's Isotope Committee Meeting, St. John's Hospital, 8:30 A.M.

MONDAY, June 7th:

Hillcrest Medical Center Staff Meeting, 8:00 P.M.
 Adult Heart Clinic, Tulsa County Heart Association, Hillcrest Medical Center Outpatient Department, 8:00 A.M.

TUESDAY, June 8th:

St. John's Tumor Clinic, 8:00 A.M.

WEDNESDAY, June 9th:

Hillcrest Medical Center, Clinical Pathological Conference, 7:00 P.M.
 St. John's Isotope Clinic, St. John's Hospital, 8:30 A.M.
 Adult Heart Clinic, Tulsa County Heart Association, Hillcrest Medical Center Outpatient Department, 8:00 A.M.
 Interns and Residents Lecture, St. John's Hospital, 7:00 P.M. Subject: "Tumors of the Breast." Speaker, Dr. William C. Pratt.

THURSDAY, June 10th:

Final day to pay Annual Reregistration Fee of \$3.00 to Oklahoma State Board of Medical Examiners.
 Final day to pay Blue Cross Hospital Insurance premiums.

FRIDAY, June 11th:

Adult Heart Clinic, Tulsa County Heart Association, Hillcrest Medical Center Outpatient Department, 8:00 A.M.
 St. John's Tumor Clinic, Clinical Conference, 8:30 A.M.
 St. John's Isotope Committee Meeting, St. John's Hospital, 8:30 A.M.

MONDAY, June 14th:

No Tulsa County Medical Society meeting on this date. Society meetings suspended until September 13, 1954.
 Adult Heart Clinic, Tulsa County Heart Association, Hillcrest Medical Center Outpatient Department, 8:00 A.M.
 Copy deadline for the July issue of The Bulletin.

TUESDAY, June 15th:

St. John's Tumor Clinic, 8:00 A.M.
 Medical Assistants Society Meeting, Michaelis Cafeteria, 6:30 P.M.
 Congenital Heart Disease Clinic, Tulsa County Heart Association, Hillcrest Medical Center Outpatient Department, 8:00 A.M.

JUNE MEDICAL CALENDAR

WEDNESDAY, June 16th:

Board of Trustees Meeting, Tulsa County Medical Society, B9 Medical Arts Building, Tulsa, 1:00 P.M.
 St. John's Isotope Clinic, St. John's Hospital, 8:30 A.M.
 Interns and Residents Lecture, St. John's Hospital, 7:00 P.M. Subject: "Endometriosis." Speaker, Dr. Dixon N. Burns.
 Adult Heart Clinic, Tulsa County Heart Association, Hillcrest Medical Center Outpatient Department, 8:00 A.M.

FRIDAY, June 18th:

St. John's Isotope Committee Meeting, St. John's Hospital, 8:30 A.M.
 St. John's Tumor Clinic, Clinical Conference, 8:30 A.M.
 Adult Heart Clinic, Tulsa County Heart Association, Hillcrest Medical Center Outpatient Department, 8:00 A.M.

SUNDAY, June 20th:

Conference of Presidents and Other Medical Society Officers, American Medical Association, Palace Hotel, San Francisco, California, 1:45 P.M.

MONDAY, June 21st:

St. John's Hospital: Clinical Pathological Conference, 7:15 P.M.; Staff Meeting, 8:00 P.M.
 American Medical Association, 1954 Annual Meeting, San Francisco, California. Continues through June 25th.
 Adult Heart Clinic, Tulsa County Heart Association, Hillcrest Medical Center Outpatient Department, 8:00 A.M.

TUESDAY, June 22nd:

St. John's Tumor Clinic, 8:00 A.M.

WEDNESDAY, June 23rd:

St. John's Isotope Clinic, St. John's Hospital, 8:30 A.M.
 Adult Heart Clinic, Tulsa County Heart Association, Hillcrest Medical Center Outpatient Department, 8:00 A.M.
 Interns and Residents Lecture, St. John's Hospital, 7:00 P.M. Subject: "Ovarian Tumors." Speaker, Dr. William R. McShane.

FRIDAY, June 25th:

Children's Medical Center Staff Meeting, 8:00 A.M. Subject: "Occupational and Physical Therapy In Rehabilitation Of Children." Speaker, Dr. John W. Deeton, Okmulgee, Oklahoma.
 Adult Heart Clinic, Tulsa County Heart Association, Hillcrest Medical Center Outpatient Department, 8:00 A.M.
 St. John's Isotope Committee Meeting, St. John's Hospital, 8:30 A.M.
 St. John's Tumor Clinic, Clinical Conference, 8:30 A.M.

MONDAY, June 28th:

Tulsa Academy of General Practice Meeting, Hotel Tulsa, 6:30 P.M. Subject: "Trends Influencing Medical Practice." Speaker, Dr. Roscoe L. Pullen, Dean, University of Missouri School of Medicine, Columbia, Mo.
 Adult Heart Clinic, Tulsa County Heart Association, Hillcrest Medical Center Outpatient Department, 8:00 A.M.

TUESDAY, June 29th:

St. John's Tumor Clinic, 8:00 A.M.

WEDNESDAY, June 30th:

Adult Heart Clinic, Tulsa County Heart Association, Hillcrest Medical Center Outpatient Department, 8:00 A.M.
 St. John's Isotope Clinic, St. John's Hospital, 8:30 A.M.
 Interns and Residents Lecture, St. John's Hospital, 7:00 P.M. Subject: "Polio-myelitis." Speaker, Dr. R. W. Goen.

Upjohn

tablet tonic:
Cebēfortis Tablets

TRADEMARK, REG. U. S. PAT. OFF.

...and hematonic:
Cebētinic Tablets

TRADEMARK, REG. U.S. PAT. OFF.

Each Cebēfortis Tablet contains:

Ascorbic Acid.....	150.0 mg.
Thiamine Hydrochloride.....	5.0 mg.
Riboflavin.....	5.0 mg.
Pyridoxine Hydrochloride.....	1.0 mg.
Calcium Pantothenate.....	10.0 mg.
Nicotinamide.....	50.0 mg.
Folic Acid.....	0.75 mg.
Vitamin B ₁₂ Activity.....	2.0 mcg.

Bottles of 100 and 500 tablets

Each Cebētinic Tablet contains:

Ascorbic Acid.....	25.0 mg.
Thiamine Hydrochloride.....	2.0 mg.
Riboflavin.....	2.0 mg.
Pyridoxine Hydrochloride.....	0.5 mg.
Nicotinamide.....	10.0 mg.
Ferrous Gluconate.....	5.0 grs.
Folic Acid.....	0.67 mg.
Vitamin B ₁₂ Activity.....	5.0 mcg.

Bottles of 60 and 500 tablets

The Upjohn Company, Kalamazoo, Mich.

T. ROY BARNES D R U G R Y

Prescription Specialists

RECOMMEND
WITH CONFIDENCE
FOR
PRESCRIPTIONS — SICKROOM SUPPLIES

Downtown
603 S. BOULDER
Phone 2-3118

● Eastside
44 N. HARVARD
Phone 6-1111



Doctor

You are cordially invited to visit our beautiful new 135-bed addition and to inspect our new air-conditioned Nurses Residence, Polio Center, and remodeled facilities. These new facilities make Hillcrest Medical Center one of Oklahoma's finest hospitals.

HILLCREST MEDICAL CENTER

1653 East 12th Street, Tulsa

Ph. 3-2131

Medical Jottings

Television Station KCEB of Tulsa is now carrying the periodic medical telecasts entitled "March of Medicine," sponsored by Smith, Kline & French in cooperation with the American Medical Association. A schedule of future programs in the series will be sent to all members of the Tulsa County Medical Society in early June. The next in the series will be June 24, 1954, at 8:00 P.M.

A veteran Oklahoma physician, Dr. Louis H. Ritzhaupt of Guthrie, is seeking the Democratic nomination for Governor in the coming State primary election of July 6th. A former President of the Oklahoma State Medical Association, Dr. Ritzhaupt has served several terms in the Oklahoma State Senate.

Appearing on a radio roundup of news and public opinion about Tulsa's tornado alert early last month, Dr. Hugh Perry reported no serious or widespread medical repercussions from the scare. Speaking as Chairman of the Tulsa County Medical Society's Public Policy Committee, Dr. Perry told KVOO listeners in a brief statement that principal medical results were confined to a case of hysteria in a child (probably induced by the parents), the prescribing of a few light sedatives for nervous patients, and an injury when a man tumbled down a flight of cellar stairs while seeking shelter. The death of a cardiac sufferer, at first supposed to have been induced by the excitement of the alert, was reported later to have had no connection with the scare.

Tulsa doctors will hear the inauguration of Dr. Walter B. Martin of Norfolk, Virginia, as President of the American Medical Association, on June 22, 1954, via Radio Station KRMG. The event will be carried by 340 stations of the American Broadcasting System and will originate from the AMA Annual Meeting at San Francisco, California.

Dr. Robert D. Moreton, nationally known radiologist of Fort Worth, Texas, headlines the Tulsa County Medical Society's first Fall scientific meeting on Sep-

Space Now Renting

RANCH ACRES MEDICAL CENTER

Two Attractive Suites, 800 Square Feet, Now Available. Suitable For One Or Two Doctors. Completely Air Conditioned. Large Attractive Lobby, Tastefully Decorated. Ample Parking Facilities. For Complete Information and Inspection of Premises Call or Visit:

W. H. BROWN

7-7595

JACOBSON COMPANY

3202 East 31st Street

BUTLER DRUG STORE

6528 East King St

Telephone 85-1563

*A Professional Pharmacy
for Your Convenience
Serving Northeast Tulsa.*

YES, WE DELIVER!

C. O. BUTLER, Owner



DICK KELLO

*Invites You To
Patronize His Fine
Prescription Service
Free Delivery
Covering East Tulsa*

BALL DRUG STORE

College at Admiral

Ph. 6-2156, 9-9005

Telephone Your Prescriptions—

*For Prompt And
Accurate Compounding
By Reliable Licensed
Pharmacists*

Free Delivery

Telephone 7-7519

BROOKSIDE DRUG STORE

3348 South Peoria

tember 13, 1954. His subject will be "Radiological Diagnosis of Lesions of the Colon." Meanwhile, the Society is in its annual summer recess.

The date of the Second Annual Founders Day Clinic of the Tulsa County Medical Society has been tentatively set for Thursday, October 7, 1954. The event will feature four visiting distinguished guest speakers, each of whom will deliver two papers. Dr. Earl I. Mulmed is again Chairman of the Clinic. This year's Founders Day Clinic will be jointly sponsored by the Tulsa County Heart Association, the Arthritis and Rheumatism Foundation of Tulsa, the Tulsa Academy of General Practice, and the Oklahoma Division of the American Cancer Society.

An exhibit on medical education is planned by the Tulsa County Medical Society for the 1954 Annual Tulsa State Fair late in September. The project will be supervised by Dr. R. M. Wadsworth's Health Education Committee, a unit of the Society's Public Policy Committee.

As this issue of The Bulletin went to press, a joint committee comprising six members each of the Tulsa County Bar Association and the Tulsa County Medical Society was scheduled to meet on May 26th for a discussion of mutual problems. Subject of the first meeting related to problems in connection with medical testimony before the Oklahoma State Industrial Commission. The Bar Association is represented by Mr. A. M. Covington, Mr. Chris L. Rhodes, Mr. Floyd L. Rheam, Mr. Charles R. Fellows, Mr. Ben Murdock, and Mr. S. J. Clendenning. Representing the Medical Society were Dr. F. L. Flack, Dr. Tom Hall Mitchell, Dr. Thomas H. Davis, Dr. William Orlando Smith, Dr. Gifford H. Henry, and Dr. Worth M. Gross.

All medical doctors have been invited to attend the weekly Isotope Medicine Clinics held at St. John's Hospital. Dr. Lucien M. Pascucci, Chairman, said the Clinic meets each Wednesday at 8:30 A.M.

Its a girl for DR. and MRS. MURRAY M. CASH, born May 22nd. Congratulations!

DR. F. W. HENDERSON is vacationing in Florida.

“Pandy’s surprised
to get in
so soon”



HERE'S HOW
POLYSAL[®]
HELPS YOUR PATIENTS

1

POLYSAL prevents and corrects hypopotassemia without danger of toxicity¹

2

POLYSAL corrects moderate acidosis without inducing alkalosis¹

3

POLYSAL replaces the electrolytes in extracellular fluid¹

4

POLYSAL induces copious excretion of urine and salt¹

Polysal, a single I.V. solution to build electrolyte balance, is recommended for electrolyte and fluid replacement in all medical, surgical and pediatric patients where saline or other electrolyte solutions would ordinarily be given. Available in distilled water—250 cc. and 1000 cc. and in 5% Dextrose—500 cc. and 1000 cc.

INSTEAD OF UNPHYSIOLOGICAL
“PHYSIOLOGICAL SALINE” MAKE

POLYSAL

YOUR ROUTINE PRESCRIPTION

1. Fox, C. L. Jr., et al.
An Electrolyte Solution Approximating Plasma Concentrations with Increased Potassium for Routine Fluid and Electrolyte Replacement.
J. A. M. A., March 8, 1952.



CUTTER Laboratories
BERKELEY, CALIFORNIA

Representative: Hubert Fraker 2128 Churchill Way, Oklahoma City Ph 8-4050

The COYNE CAMPBELL S A N I T A R I U M



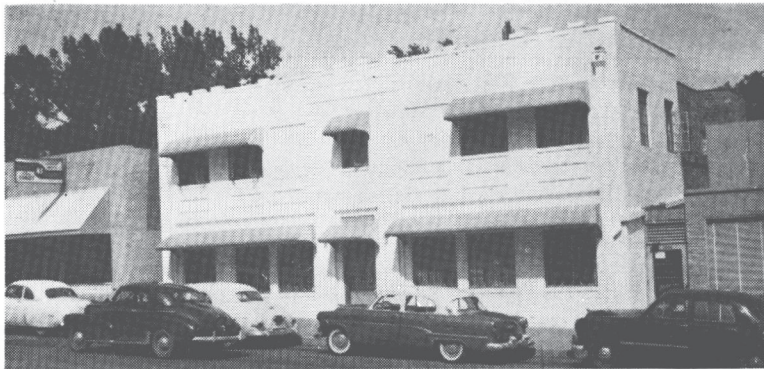
COYNE H. CAMPBELL, M.D.
Chief of Staff

Route 4, Box 65

Oklahoma City, Okla.

Telephone GA. 7-2441

Owned by the Oklahoma Medical Research Foundation



DESIRABLE SPACE FOR RENT IN THIS BUILDING

Four Private Rooms

Street Floor

Air-Conditioned

Opportunity to share large reception room, operating room, recovery rooms, laboratory, x-rays, EKG, BMR, diathermy, and large storage room. No investment. Ready to use immediately. \$200 per month.

1307 South Main

Telephone 3-0151 for Information

BLOOD CENTER NEWS

DISTRIBUTION & REPLACEMENT REPORT April, 1954

Hospital:	Used: Bloods	ments: Replace-	% Repl.
Hillcrest	312	113	36.2%
St. John's	562	205	36.5%
Osteopathic	80	27	33.8%
Byrne	34	25	73.5%
Mercy	19	10	52.6%
Moton	18	8	44.4%
Tulsa Osteo.	11	9	81.8%
Broken Arrow	9	8	88.9%
Other	2	12	600.0%
Totals	1,047	417	39.8%

June is the beginning, not only of summer, but also of the seasonal lull in blood donations. Replacements have dropped sharply in the last sixty days, particularly at Tulsa's two major hospitals. It is more important than ever that physicians make every effort to channel replacement donors to the Tulsa County Red Cross Blood Center, 602 South Cheyenne, Tulsa. Summer donor hours have been posted in every hospital. The Blood Center telephone number is 54-4281.

Recent newspaper publicity has re-emphasized the necessity for physicians to avoid loose small talk which patients accept and interpret as scientific diagnosis. A published letter from a reader of a Tulsa newspaper criticized Blood Center donor standards as being too high. The standards for blood donors acceptable at the Tulsa County Red Cross Blood Center are those established by the National Institutes of Health in "Minimum Requirements Citrated Whole Blood (Human)" as revised and published February 19, 1953, which states: "Only persons having not less than 12.5 grams of hemoglobin per 100 ml. of blood shall serve as donors. If the copper sulfate specific gravity method is used to determine hemoglobin, a specific gravity of not less than 1.053 shall be used as indicating an adequate hemoglobin level." These standards were established for the protection of the donor's health, and have been approved by the Medical Advisory Committee to the Blood Center. If

North and West

13TH AND MAIN

Telephone 4-3103

SCOTT ROBISON'S

Service

**PRESCRIPTION
STORES**

15TH AND LEWIS

Telephone 9-6393

South and East

HARVARD DRUG STORE

B. C. SHINN, Owner

PHONE 6-2186

*The
Suburban
Prescription
Store*

FREE
PRESCRIPTION
DELIVERY
3244 E. 11th St.
Tulsa

**An Independently
Owned Prescription
Pharmacy Serving
All Tulsa Doctors**

Purdy's
**RANCH ACRES
PHARMACY**

in beautiful Ranch Acres
3102 S. HARVARD

Telephone
7-4550
for the finest
in
Prescription Service
Free Delivery

**ST. JOHN'S
HOSPITAL**

*A Leading
Institution
In
Oklahoma
Medicine*

1923 SOUTH UTICA
TULSA, OKLAHOMA
TELEPHONE
7-3361

standards are to mean anything, the Center cannot accept donors with less hemoglobin even though they are not actually ill. Physicians are referred to the discussions in "Blood Relations," a manual prepared for doctors and hospital personnel for a better understanding of the operations of the Tulsa County Red Cross Blood Center. Additional copies of "Blood Relations" are available upon request of the Executive Offices of the Tulsa County Medical Society, B9 Medical Arts Building, Tulsa, telephone 4-8161.

FOR SALE: New fluoroscopic and x-ray machine, 100 KV, 100 MA, spot film device, rotating anode tube, complete with automatic controls. Extremely good price. Walter S. Larrabee, M.D., 411 Medical Arts Bldg., Tulsa, Ph. 4-3111.

FOR SALE: Two Sturgis consultation chairs, one Sturgis swivel posture chair. Like new, green leather upholstery. Good price. For information call Executive Secretary, Tulsa County Medical Society, telephone 4-8161.

FOR SALE: Full participating membership in Tulsa Country Club. Includes golf privileges. For information call Executive Secretary, Tulsa County Medical Society, telephone 4-8161.

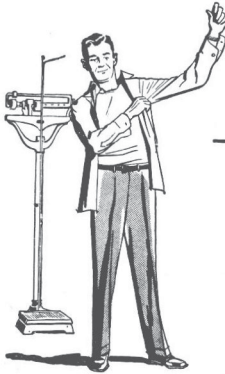
DR. DOUGLAS T. FERRARO has removed his practice to Providence, Rhode Island.

DR. RALPH A. MCGILL has returned from a Texas vacation.

The Oklahoma City Obstetrical & Gynecological Society has announced the election of DR. WALTER B. SANGER, DR. WILLIAM J. O'MEILIA, and DR. ROBERT E. DILLMAN of Tulsa to membership.

DR. HARLAN THOMAS and DR. R. M. WADSWORTH have been appointed by the Board of Trustees of the Tulsa County Medical Society to serve as Alternate Delegates to the Oklahoma State Medical Association for a one-year term.

DR. DIXON N. BURNS has been vacationing in Chicago, Illinois.



*"Voice O.K. but let's
take off a few pounds"*

REVICAPS provide easy appetite-control for those patients who are dangerously overweight, and they are ideal for the man or woman who doesn't require a drastic diet, but will benefit from losing a few pounds.

REVICAPS supply d-Amphetamine to elevate the patient's mood, methylcellulose to furnish bulk, 21 essential vitamins and minerals.

The prescription product
that helps reduce weight

REVICAPS*

d-Amphetamine—Vitamins and Minerals Lederle

Bottles of 100 and 1,000
... sold on prescription only.

Dosage: 1 or 2 capsules, 1/2
to 1 hour before each meal.

LEDERLE LABORATORIES DIVISION

AMERICAN Cyanamid COMPANY Pearl River, New York



*Our Staff of
Registered Pharmacists*

DEANE D. RALEY

JIMMIE SHADDOCK

JOE C. PLEMONS

ARTHUR B. PARKS

GERALD FAUBION

Our modern delivery equipment assures your
patients prompt efficient service.

STORE HOURS: 8:00 A.M. - 9:00 P.M.
Sunday 10:00 A.M. - 8:00 P.M.

Free Customer Parking in Rear

RALEY - SHADDOCK
PRESCRIPTION PHARMACY

1325 East 15th

Ph. 4-3133

You may call or send your prescriptions to us with the knowledge and assurance that they will be properly handled . . . just as you have every right to expect.

VERLE SMITH'S PRESCRIPTION SHOP

In Brookside

Ph. 7-3387 — 3409 S. PEORIA

City Wide Delivery

Prescriptions Sick Room Supplies

SPARTAN DRUG

6343 East Tecumseh

Telephone 8-4076

*Serving Spartan-
Douglas-American
Area*

**PRESCRIPTIONS SENT TO US
WILL BE PROMPTLY FILLED**

Two Pharmacists to Serve You

STEVE LAWRENCE

JOHN ADAMS

NEW APPLICANTS

The following physicians are applicants for membership in the Tulsa County Medical Society:

Lester I. Nienhuis, M.D. Ranch Acres Medical Center, 3102 S. Harvard, Tulsa. Medical degree, University of Michigan Medical School, 1946. Interned University of Michigan Hospital, Ann Arbor, Michigan, 1946-47. Four year residency in General Surgery, University of Michigan, completed 1952. Military service, Army Medical Corps, discharged with rank of Captain, 1954. Specialty, General Surgery. Diplomate, American Board of Surgery. Recommended by Dr. James B. Thompson and Dr. Thomas J. Hardman.

Thomas L. Ozment, M.D. Springer Clinic, 604 S. Cincinnati, Tulsa. Medical Degree, Washington University School of Medicine, 1941. Interned Brooke General Hospital, San Antonio, Texas, 1941-42. Military service, United States Army Medical Corps, 1942-54, discharged with rank of Lieutenant-Colonel. Assistant Resident in Surgery, Percy Jones General Hospital, Battle Creek, Michigan, 1946-47. Resident in Ophthalmology, Eye & Ear Hospital, University of Pittsburgh Medical Center, Pittsburgh, Pennsylvania, 1947-50. Diplomate, American Board of Ophthalmology. Fellow, American College of Surgeons. Fellow, American Academy of Ophthalmology and Otolaryngology. Specialty, Ophthalmology. Recommended by Dr. E. G. Hyatt and Dr. Carl J. Hotz.

DR. E. N. LUBIN has returned from New York, N. Y. where he attended the 1954 Annual Meeting of the American Urological Association, May 31-June 3, at the Waldorf-Astoria.

Named to the Tulsa County Medical Society's Civilian Defense Committee last month were DR. HAYS R. YANDELL, Chairman, DR. G. H. HENRY, DR. BETTY CONRAD, DR. WILLIAM R. TURNBOW, DR. MILTON L. BERG, DR. RALPH A. MCGILL, and DR. JAMES B. THOMPSON.

For Beginning Head Colds—

Rhinall Cold Capsules

Useful in the Acute Coryza of Virus stage of Head Colds—for relief of Sneezing, Blockage and excessive Secretions—symptoms not relieved by the sulfonamides.

EACH CAPSULE CONTAINS

- 'Propadrine' Hydrochloride . . . ½ grain (Phenylpropanolamine Hydrochloride)
- Powdered Extract of Belladonna ½ grain (Equivalent to 0.0015 gr. total Alkaloids)
- Acetophenetidin 2 grains
- Acid Acetylsalicylic 2½ grains

In vials of 16 Capsules

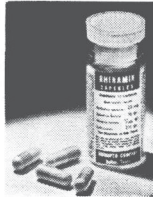
Detailed to the Medical Profession Exclusively

For Allergic Head Colds—

Rhinamin CAPSULES

afford welcome relief of the annoying symptoms associated with allergic head colds.

A combination of four effective ingredients for the symptomatic relief of nasal congestion, hypersecretion and headache associated with allergies, and allergic head colds.



EACH CAPSULE CONTAINS:

- Pyrilamine Maleate 25 mg.
- Ephedrine Sulfate ⅛ gr.
- Atropine Sulfate 1/500 gr.
- Salicylamide 2½ gr.

In vials of 12 Capsules

Samples on Request

RHINOPTO COMPANY • Dallas, Texas

DOCTOR, May We Help YOU?

The Visiting Nurse Service can save your valuable time!

Nursing care given *only* under physician's directions!

All citizens of Tulsa County benefit and may pay according to their ability. Maximum fee of \$2.50 per nursing visit.

Call Your Public Health Association – 54-4238



The Emblem Of Approval

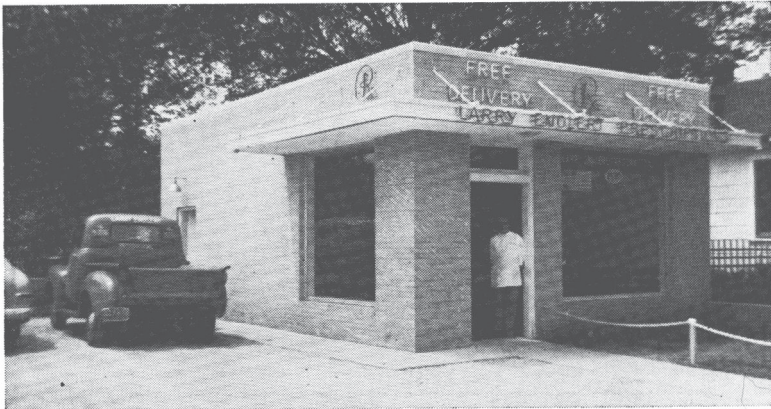
Owned and operated by the Tulsa County Medical Society, the Medical Credit Bureau offers an efficient reliable collection service at cost. More than 135 Tulsa doctors and dentists attest to its discreet collection abilities.

MEDICAL CREDIT BUREAU

Official Collection Agency of The Tulsa County Medical Society

B-9 Medical Arts Building

Telephone 3-6331



*The best in prescription service. Convenient free parking.
Prompt free delivery.*

LARRY ENGLERT PRESCRIPTIONS, INC.

2526 East Admiral Pl.

Ph. 9-7736, 9-7743

Be Certain with Curtain

CURTAINS PRESCRIPTION LABORATORY

SIXTH AND BOULDER

PHONE 4-7116

Across the Street North From Medical Arts Bldg.

MEDICAL SERVICE SOCIETY OF TULSA

Membership Roster, Tulsa Chapter

<i>Name:</i>	<i>Representing:</i>	<i>Telephone:</i>
Jim Baughman	Schenley Laboratories	9-9165
William A. Cates	E. R. Squibb Co.	7-1267
J. P. Crawford	Armour Laboratories	6-3481
O. C. (Chuck) Chapman	Merck & Company	3-0654
Joe F. Chappell	Kremers-Urban	3-5237
C. R. Doran	Lakeside Laboratories	Claremore 1083
C. R. Eisenschmidt	Wm. S. Merrell Co.	72-2375
Verne L. French	Wyeth, Inc.	92-2443
R. C. Gooch	Abbott Laboratories	9-4389
J. L. Hedges	S. E. Massengill Co.	6-8538
Jerry Jeep	Lederle Laboratories	72-4365
C. M. (Mike) Kelly	National Drug Co.	9-9311
A. L. Kessler	Pitman-Moore Co.	5-7951
Dorwin Lamkin	Upjohn	7-1668
R. E. Loftus	Warren-Teed	7-1717
W. M. Mashburn	Lederle Laboratories	72-8275
R. T. (Bob) Mauch	Burroughs-Wellcome	7-4347
Ralph L. Miller	Hoffman-LaRoche	7-1878
A. M. Sayles	E. R. Squibb & Co.	72-1646
Tom Sellers	G. D. Searle	9-7361
Jim Southerland	J. B. Roerig & Co.	72-1907
Cecil Tredway	Wyeth Laboratories	9-0075
Bill Walker	Parke-Davis	9-8015
Preston Walker	Upjohn	7-6464
William A. Wilson	Baxter Laboratories	8-3846
H. L. (Jack) Wood	Wintrop-Stearns	72-8218

SPECIAL PURPOSE FOODS

LOW-SODIUM FOODS

LOW-CALORIE FOODS

DIABETIC FOODS

Phone 3-1106

Akin's

718 S. Boulder

Professional Directory

S. Y. ANDELMAN, M.D.
Diagnosis & Treatment of
Arthritis & Rheumatic Diseases
 1611 South Boston Ph. 2-3885

WILLIAM M. BENZING, JR., M.D.
Diplomate American Board of Radiology
 302 Medical Arts Bldg. Ph. 3-3044

BERGET H. BLOCKSOM, M. D.
MAXWELL A. JOHNSON, M. D.
 Urologists
Diplomates, American Board of Urology
 517 Medical Arts Bld. Ph. 54-1888

MANUEL BROWN, M. D.
 Allergic Diseases
 1619 E. 15th Street Ph. 54-5552

EMIL M. CHILDERS, M.D.
 General Surgery
 Sand Springs, Okla. Ph. 100

EUGENE S. COHEN, M.D.
 Obstetrics & Gynecology
 1239 East 36th Pl. Ph. 7-7703

SAFETY R. FIRST, M.D., F.A.C.C.
 Cardiology & Electrocardiology
 1011 Medical Arts Bldg. Ph. 5-7545

SAMUEL E. FRANKLIN, M. D.
 General Surgery
 1619 E. 15th Street Ph. 3-2109

JOHN F. GRAY, JR., M.D.
 Neuropsychiatry
 506 Medical Arts Bldg. Ph. 2-7039

HARRY GREEN, M.D.
 Diseases of the Skin
 X-Ray & Radium Therapy
 311 Medical Arts Bldg. Ph. 4-7585

SPRINGER CLINIC

Sixth and Cincinnati

Tulsa

Medicine

D. O. Smith, M.D.
 E. G. Hyatt, M.D.
 H. A. Ruprecht, M.D.
 Albert W. Wallace, M.D.
 Vincel Sundgren, M.D.
 Dean C. Walker, M.D.
 Thomas H. Fair, M.D.
 Ernest W. Reynolds, Jr., M.D.

Neurology and Psychiatry

Tom R. Turner, M.D.
 Joe E. Tyler, M.D.

Pediatrics

G. R. Russell, M.D.

Telephone 5-6621

General Surgery

Carl J. Hotz, M.D.
 William C. Pratt, M.D.

Urology

K. F. Swanson, M.D.
 William F. Boyer, M.D.

**Ear, Nose and Throat
 and Plastic Surgery**
 Donald L. Mishler, M.D.

Orthopedic Surgery
 Charles E. Brighton, M.D.

Ophthalmology
 Thomas L. Ozment, M.D.

Anesthesia

M. R. Steel, M.D.

Professional Directory

MARSHALL O. HART, M.D.

General Practice

1228 South Boulder Ph. 2-5904

MARTIN LEIBOVITZ, M.D.

Thoracic and Cardiovascular Surgery
 Certified American Board of Surgery
 and Board of Thoracic Surgery

812 Medical Arts Building Ph. 3-8722

JAMES W. KELLEY, M.D., F.A.C.S.

Plastic and Reconstructive Surgery
 Diplomate, American Board
 Of Plastic Surgery

206 Philtower Bldg. Tulsa

C. S. LEWIS, JR., M.D.

Internal Medicine

501 Medical Arts Bldg. Ph. 54-2778

WALTER S. LARRABEE, M.D.

X-Ray Diagnosis & Therapy
 Radium Therapy

411 Medical Arts Bldg. Ph. 4-3111

E. N. LUBIN, M.D.

Diplomate, American Board of Urology
 Genito-Urinary Diseases
 303 Medical Arts Bldg.

Office Ph. 3-6008 Res. Ph. 7-4388

MARION K. LEDBETTER, M.D.

Diplomate, American Board of Pediatrics

1453 S. Quaker Ph. 3-4332

VANCE LUCAS, M. D.

Thoracic and General Surgery
 Diplomate, American Board of Surgery
 and Board of Thoracic Surgery

Medical Arts Building Ph. 3-5513



TULSA CLINIC

915 South Cincinnati

Surgery

Andre B. Carney, M.D.,
 F.I.C.S., F.A.C.S.

James H. Neal, Jr., M.D.
 American Board of Surgery

Medicine

H. W. Ford, M.D.

Cardiology and
 Internal Medicine

James C. Peters, M.D.

COMPLETE
 CLINIC
 FACILITIES

Telephone 4-0177

Miss Bettye Adams
 Director

Neurology and
 Internal Medicine
 O. L. Hill, M.D.

X-Ray and
 Gastro-enterology
 Earl M. Lusk, M.D.

Internal Medicine
 Craig S. Jones, M.D.

Dentistry
 J. Thurman Gamble, D.D.S.

Professional Directory

<p>JAMES D. MARKLAND, M.D. Allergy 411 Medical Arts Bldg. Ph. 4-3111</p>	<p>HERSCHEL J. RUBIN, M.D. LEONARD L. KISHNER, M.D. Diplomates, American Board of Pediatrics Diseases of Infants & Children 1916 South Utica Tulsa</p>
<p>RALPH A. MCGILL, M.D., F.A.C.S. Surgery-Radium 1010 Medical Arts Bldg. Ph. 4-4215</p>	<p>J. D. SHIPP, M.D. Surgery and Diseases of the Colon and Rectum 708 Medical Arts Bldg. Tulsa</p>
<p>EDWARD L. MOORE, M.D., F.A.C.S. Surgery Diplomate, American Board of Surgery 215 Braniff Bldg. Ph. 3-4789 Res. Ph. 7-1623</p>	<p>W. A. SHOWMAN, M.D. Dermatology 408 Medical Arts Bldg. Ph. 3-7789</p>
<p>IRON H. NELSON, M.D. Clinical and Surgical Pathology 1107 Medical Arts Bldg. Tulsa</p>	<p>WADE SISLER, M.D. Orthopedic Surgery 8th & Elgin Ph. 5-3123</p>
<p>MARQUE O. NELSON, M. D. Practice Limited to Dermatology Radium and X-Ray Therapy 510 Medical Arts Bldg. Tulsa</p>	<p>CHARLES G. STUARD, M.D. Ophthalmology 221 Court Arcade Bldg. Ph. 4-3435</p>
<p>L. C. NORTHRUP, M.D., F.I.C.S. Gynecology & Obstetrics 1307 S. Main Ph. 3-0151</p>	<p>LEON H. STUART, M.D., F.A.C.R. X-Ray Diagnosis 1107 Medical Arts Bldg. Ph. 54-5348</p>
<p>THE ORTHOPEDIC CLINIC 619 South Main Street Tulsa Practice Limited To Bone & Joint Surgery JOHN E. McDONALD, M.D. FRANK A. STUART, M.D. JOHN C. DAGUE, M.D.</p>	<p>TURNBOW & RAY CLINIC Surgery - Diagnostic and Therapeutic Blocks 3015 E. 15th Street Ph. 9-6397 Ph. 9-6398</p>
<p>WILLIAM J. OSHER, M. D. Internal Medicine 706 Medical Arts Bldg. Ph. 4-9025</p>	<p>ARNOLD H. UNGERMAN, M.D. MILFORD S. UNGERMAN, M.D. Diagnosis & Treatment of Nervous and Mental Diseases 404 Medical Arts Bldg. Ph. 2-3151</p>
<p>SIMON POLLACK, M.D.. D.A.B.R. Diagnostic and Therapeutic Radiology 316 Braniff Bldg. Ph. 2-7517</p>	<p>R. M. WADSWORTH, M.D. Pediatrics 1445 S. Quaker Ph. 3-4300</p>