

APR 2 1954

LIBRARY
TULSA COUNTY MEDICAL SOCIETY

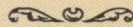
April, 1954

THE BULLETIN

of the Tulsa County Medical Society

IN THIS ISSUE

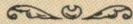
Dr. Don P. Morris, Illinois Psychiatrist,
Speaks To Medical Society April 26th



1954 Medical Public Relations Program Set



Third Annual Mental Health Institute
Scheduled In Tulsa, April 27, 1954

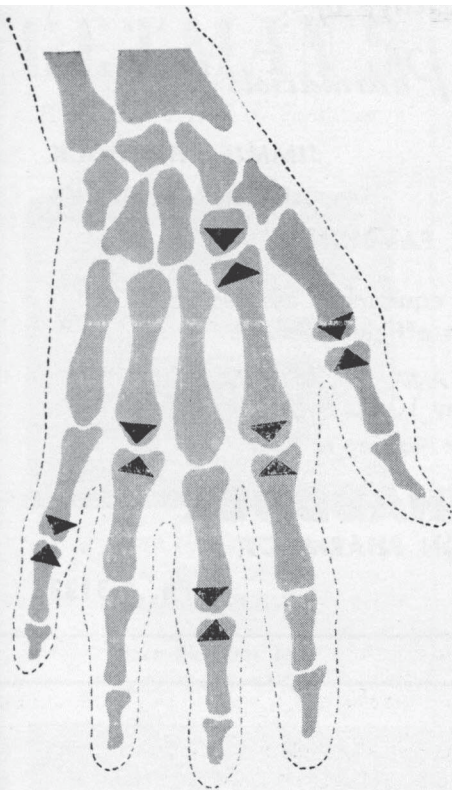


Ranch Acres Medical Center To Open

Vol. 20



No. 4



in
arthritis
and allied
disorders

Rapid Relief of Pain
usually within a few days

**Greater Freedom
and Ease of Movement**
functional improvement in a significant
percentage of cases

No Development of Tolerance
even when administered over
a prolonged period

BUTAZOLIDIN



(brand of phenylbutazone)

Its usefulness and efficacy substantiated by numerous published reports, BUTAZOLIDIN has received the Seal of Acceptance of the Council on Pharmacy and Chemistry of the American Medical Association for use in:

- Gouty Arthritis
- Psoriatic Arthritis
- Painful Shoulder (including peritendinitis, capsulitis, bursitis and acute arthritis)
- Rheumatoid Arthritis
- Rheumatoid Spondylitis

Since BUTAZOLIDIN is a potent agent, patients for therapy should be selected with care; dosage should be judiciously controlled; and the patient should be regularly observed so that treatment may be discontinued at the first sign of toxic reaction.

Descriptive literature available on request.

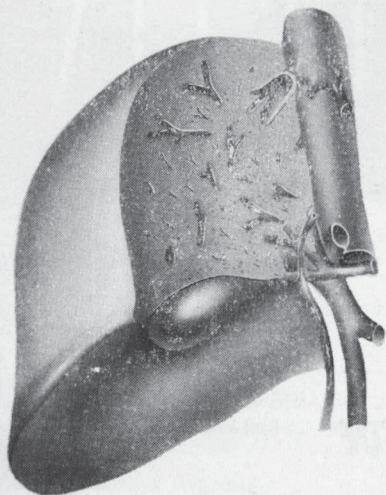
BUTAZOLIDIN® (brand of phenylbutazone), coated tablets of 100 mg.



GEIGY PHARMACEUTICALS

Division of Geigy Chemical Corporation
220 Church Street, New York 13, N. Y.
In Canada: Geigy Pharmaceuticals, Montreal

normalize fat metabolism... protect the liver...



In your diabetic, cirrhotic, overweight and geriatric patients liver damage may be aggravated by dietary restrictions and other factors which reduce intake of lipotropics essential for liver protection.

LIPOCAPS and LIPOLIQUID provide the massive doses of choline and other important lipotropics needed to improve hepatic function, facilitate mobilization and transport of fat and curb fatty infiltration of the liver.

LIPOLIQUID

Each tablespoonful (15 cc.) contains:

Choline* (equivalent to 9.15 Gm. of choline dihydrogen citrate)	3.75 Gm.
Vitamin B ₁₂ U.S.P.	4.20 mcg.
Inositol	75.00 mg.

*As tricholine citrate.
Pint bottles.

Dosage: 1 to 2 tablespoonfuls daily for adults.
LIPOLIQUID is sugar- and alcohol-free.

LIPOCAPS[®]

Each orange capsule contains:

Choline bitartrate	450 mg.
dl-Methionine	150 mg.
Inositol	100 mg.

Bottles of 100.

Dosage: One capsule three times daily.

*L*akeside laboratories, INC., MILWAUKEE 1, WISCONSIN

*Our Staff of
Registered Pharmacists*

DEANE D. RALEY

JIMMIE SHADDOCK

JOE C. PLEMONS

ARTHUR B. PARKS

GERALD FAUBION

Our modern delivery equipment assures your patients prompt efficient service.

STORE HOURS: 8:00 A.M. - 9:00 P.M.
Sunday 10:00 A.M. - 8:00 P.M.

Free Customer Parking in Rear

RALEY - SHADDOCK
PRESCRIPTION PHARMACY

1325 East 15th

Ph. 4-3133

A safer tranquilizer-antihypertensive

No other rauwolfia product offers such

Unvarying potency / Accuracy in dosage / Uniform results

Serpasil^{T. M.}
(reserpine Ciba)

A pure crystalline alkaloid of Rauwolfia serpentina

C I B A

Tablets 0.25 mg. and 0.1 mg.

2/2009M

GETMAN'S

ROY R. GETMAN, Founder



Store Number One
MAIN & 6TH
Telephone 3-6171

Store Number Two
4606 EAST 11TH
Telephone 9-5233

*As Near To You
As Your Telephone*

"INGREDIENTS"

No medicine of compounded prescription can be any better than "the things of which it is made." We have "the things" you need — when you need them! And you may be certain that your orders are followed "to the letter."

FREE DELIVERY NIGHT AND DAY.

WE GIVE S & H GREEN STAMPS

Sponsors of the "Tell Me, Doctor" Radio Broadcasts at 5:15 P.M. each Monday through Friday, KTUL, prepared by The Oklahoma State Medical Association.

With The Editor . . .

The official administration bills to carry out President Eisenhower's proposals for reinsuring prepaid health insurance plans through a federal agency proved to be less drastic than had been expected but still plenty potent . . . Introduced into Congress early in March, the bills (H.R. 8356 and S. 3114) provide for an initial federal grant of \$25,000,000 to finance project . . . Proposal would put a lot of strings on private insurance carriers with rather wide supervisory powers wielded by Secretary of Health, Education and Welfare Oveta Culp Hobby . . . As yet the Board of Trustees of the American Medical Association has not taken an official position on the bill, but chances for approval appear pretty slim . . . Some good work is being done by Hillcrest Medical Center's "headache" clinic, now several months in operation . . . Dr. Arnold H. Ungerman's staff is seeing an average of 15 patients per month, all with advanced migraine and headache problems . . . The electroencephalography is being done by Drs. Milford S. Ungerman and H. F. Flanigin, advisory medical work by Drs. Craig S. Jones, Robert D. Grubb, and James C. Peters . . . Don't look for any work out of your office staff come May 7th . . . The girls will be in Oklahoma City for the annual three-day session of the Medical Assistants Society of Oklahoma . . . Speakers at the 50th Annual Congress on Medical Education and Licensure at Chicago, February 7-9, rapped heavy influx of foreign M.D.'s as lowering general level of practice in this country . . . Licensure and specialty board officials criticized displaced physicians for certain "deficiencies" in medical education, lack of proper understanding of principles and ethics of American practice . . . Oklahoma State Board of Medical Examiners gets dozens of inquiries annually from foreign physicians about licensure and practice in Oklahoma . . . Like most states, Oklahoma does not license alien physicians . . . Naturalized aliens must take examinations.

hard-hitting antibiotic

ILOTYCIN

(Erythromycin, Lilly)

**especially for staphylococcus,
streptococcus, and
pneumococcus infections**

DOSAGE FORMS:

Tablets 'Ilotycin,' 100 and 200 mg. Average
dose: 200 mg. every four to six hours.



'Ilotycin'

(Erythromycin, Lilly)

ETHYL CARBONATE

Pediatric

100 mg. of 'Ilotycin' (as the ethyl carbonate)
per teaspoonful (5 cc.)

AVERAGE DOSE: _____

Thirty-pound child: One teaspoonful every six
hours.

Adults: Two teaspoonfuls every four hours.

IN 60-CC. BOTTLES

ELI LILLY AND COMPANY, INDIANAPOLIS 6, INDIANA, U.S.A.

THE BULLETIN

OF THE

TULSA COUNTY MEDICAL SOCIETY

Wilkie D. Hoover, M.D., *President*Frank J. Nelson, M.D., *President-Elect*R. M. Wadsworth, M.D., *Vice-President*Charles G. Stuard, M.D., *Secretary-Treas.*Jack Spears, *Executive Secretary*

Vol. 20

TULSA, OKLAHOMA, APRIL, 1954

No. 4

PUBLIC RELATIONS PROGRAM DEVELOPED

Public Policy Committee Announces Details of Twenty-Point Public Relations Program for Tulsa County Medical Society. More Extensive Use of Television Planned.

Details of an extensive new twenty-point program of medical public relations for the Tulsa County Medical Society for 1954 were announced last month by Dr. Hugh Perry, Chairman of the Public Policy Committee.

The blueprint of the program encompasses activities in the fields of press relationships and publicity, radio, television, civic affairs, legislation, health education, interprofessional activities, schools, membership indoctrination, and hospital relationships. It is planned to continue many of the beneficial projects begun by the Committee in 1953 and in previous years, Dr. Perry said, with emphasis upon those activities which interpret the medical profession to the public in the most favorable light.

More important of newer projects contemplated by the Committee are a study of the need for and desirability of a Society owned and operated telephone answering service (as a basic element of an emergency call service), a liaison committee with the Tulsa County Bar Association to discuss mutual problems, and a new series of medical telecasts.

The twenty points of the program are as follows:

1. Complete the Civic Health Survey project begun last year in cooperation with Tulsa Council of Social Agencies, analyze the results and utilize them in the further planning of a public relations program. Dr. John G. Matt will continue

to represent the Society in this project. The final questionnaire has been completed and interviewing of 1,000 Tulsa families will begin in the early Spring. The Survey is expected to produce useful information about medical and health habits of Tulsans, utilization of the medical profession, likes and dislikes in respect to the quality and quantity of medical care, and other related material.

2. Develop and present to the Society plans for an Emergency Call System to insure the prompt availability of a medical doctor at all times. Originally scheduled for study last year, this project was postponed to 1954 in the press of other Committee activities. Termed the "Number One Must" of a county medical society public relations program by AMA President Edward J. McCormick, emergency call systems are now in operation in most sizeable American cities. In connection with the project, the Committee has authorized a study of the need for and desirability of the Society owning and operating its own twenty-four hour telephone answering service. (A similar study and recommendation conducted in 1949 by a special committee headed by Dr. H. J. Rubin failed of Society approval by a two-to-one vote of the membership). Dr. A. B. Carney's Civic Relations Sub-Committee will be in charge of this project.

3. Continue the Press Liaison Program begun two years ago with (a) repetition

of the annual press dinner for representatives of Tulsa newspapers, radio, and television stations, (b) periodic evaluations of the effectiveness of the Code of Cooperation between Medicine and the Press as developed over the last two years, (c) provide reliable medical news, and (d) blueprint a series of institutional features about Tulsa Medicine for preparation and publication by Tulsa's two daily newspapers. Dr. Lowell Stokes' Press Relations Sub-Committee will handle this project.

4. Develop a periodic or sustaining series of medical programs for telecasting over one or more of Tulsa's television stations. As this issue of *The Bulletin* went to press, it appeared likely that the Society would sponsor the official AMA series of television programs entitled "M.D." over a Tulsa TV station in joint sponsorship with the Oklahoma State Medical Association. Dr. Stokes' Sub-Committee will handle all television activities.

5. Continue the Speaker's Bureau and the providing of doctors as speakers to lay groups on subjects of health and medical concern. With over 60 members already participating in the Bureau, Dr. George R. Russell's Speakers Bureau Sub-Committee hopes to materially increase the number of such presentations in 1954.

6. Continue the high school Pre-Med Club projects begun last year. The Society is now providing weekly programs for such clubs in Tulsa high schools. Dr. R. M. Wadsworth's Health Education and Schools Sub-Committee will continue to handle this project. Plans for an essay contest among pre-medical students are also being drawn by the Sub-Committee.

7. Continue to arrange and co-sponsor medical radio programs on Tulsa stations as much as possible. Now being heard is "Tell Me, Doctor," a factual series broad-

cast daily Monday through Friday at 5:15 P.M. over Radio Station KTUL under the commercial sponsorship of Getman Drug Store. In cooperation with the Tulsa County Heart Association, the Society recently completed a series of AMA medical broadcasts entitled "Heart of America," heard each Saturday at 5:15 P.M. over KTUL. Dr. Stokes' Sub-Committee on Press, Radio and Television will continue to supervise such projects.

8. Develop, in cooperation with the Oklahoma State Medical Association and the Oklahoma Hospital Association, a medical exhibit for the "Made In Oklahoma Show" at the Tulsa Fairgrounds, April 14-18. Over 80,000 persons are expected to see this exhibit. Dr. R. M. Wadsworth's Sub-Committee will be in charge.

9. Continue the Labor Relations Liaison Program begun in 1953 with further joint meetings with representatives of Tulsa Labor to determine mutual problems. Dr. John G. Matt is Chairman of the Labor Relations Sub-Committee.

10. Develop a liaison committee with the Tulsa Bar Association to explore mutual problems of the legal and medical professions. Mr. George H. Bowen, newly elected President of the Tulsa County Bar Association, has already pledged his support of such a project. The first meeting of the joint committee is expected to be held in mid-April with discussions devoted to the quality of medical testimony before the Oklahoma Industrial Commission. A special Sub-Committee will be appointed to develop this project.

12. Maintain the Legislative Program of the Society with emphasis upon the following: (a) a concerted effort to keep members educated on activities in the National Congress, (b) investigate and report without recommendations on the records of candidates for office in the Oklahoma State Legislature, (c) attendance by Committee representatives at the periodic regional legislative conferences of the American Medical Association, (d) legislative reports at regular Society meetings, (e) maintain personal contacts with Congressional representatives, and (f) review proposed local, state, and

(Continued on Page 36)

MEDICAL OFFICER TO SPEAK

Major Curtis P. Artz, Director of the Surgical Research Unit at the Army Medical Center, Fort Sam Houston, Texas, has been set as visiting guest speaker for the Tulsa Academy of General Practice meeting of May 24, 1954.



THE MEDICAL LIBRARY

Library of the Tulsa County
Medical Society



Miss Irma A. Beehler, *Librarian*

GIFTS OF THE MONTH—:

- Dr. Martin Leibovitz.** *American Review of Tuberculosis.* Volumes 68-69, October, 1953-February, 1954.
- Dr. Marque O. Nelson.** *Atlas of Medical Mycology,* by Emma Sadler Moss and Albert Louis McQuown. 245 pp., illustrated, Williams & Wilkins Company, Baltimore, Maryland, 1953.
- Tulsa Chapter, Arthritis and Rheumatism Foundation.** The following volumes:
Diseases of Muscle; a Study in Pathology, by Raymond D. Adams, D. Denny-Brown, and Carl M. Pearson. 556 pp., illustrated, Paul B. Hoeber Company, New York, N.Y., 1953.
Physical Medicine and Rehabilitation. Edited by Basil Kiernander, with an introduction by Lord Horder. 610 pp., illustrated, Charles C. Thomas, Publisher, Springfield, Illinois, 1953.
Shoulder Lesions, by Herbert Frederick Moseley. With 43 medical illustrations by Helen McArthur. Second Edition, revised and enlarged, 329 pp., Paul B. Hoeber Company, New York, N. Y., 1953.

The Management of Pain by Dr. John J. Bonica, published by Lea & Febiger in September, 1953, has been a popular addition to the Library of the Tulsa County Medical Society. Dr. Bonica has a background of research and clinical experience in anesthesiology as Director of the Department of Anesthesiology at Tacoma General and Pierce County hospitals, Tacoma, Washington; Clinical Associate, the Department of Anatomy at the University of Washington; and also as consultant in several federal and state hospitals in the State of Washington.

The subject is presented in three parts. The first part consists of five chapters and discusses the fundamental aspects of pain: the anatomical, neurophysiological and psychologic as well as the mental and physical effects.

The second part describes the methods used in the management of pain, including seven chapters on techniques of nerve blocking and methods used as adjuvants to blocking, such as the use of opiates, psychotherapeutic, physical and orthopedic surgery, roentgen therapy and neurological methods of treatment. Every important block procedure is described exactly as it is used in Tacoma General Hospital. A portion of these methods were described before the Section on Anesthesiology at the Annual Session of the American Medical Association in Chicago, Illinois, June 10, 1952.

Part Three deals with all the important pain syndromes, the neuralgias, pain subsequent to peripheral vascular disease, musculoskeletal pain, visceral, and cancer.

The entire book is well written and attractively illustrated throughout and may serve as either textbook or reference book. *Management of Pain* is available for loan at the Library of the Tulsa County Medical Society.

For leisure reading the Library of the Tulsa County Medical Society offers many interesting biographies and autobiographies of famous medical personalities. The doctor will find over two dozen such volumes in the Medical Library, all written in an interesting and readable style. Most popular are the biographies of Dr. Harvey Cushing, Dr. George Crile, Dr. Hugh Young, and the Mayo brothers. The latter, in particular, reads like a novel, its colorful story of the development of the Mayo Clinic being an engrossing account. Other medical personalities treated in books on the Library shelves include Dr. William Beaumont, Dr. Claude Bernard, Dr. William Crawford Gorgas, Dr. James Leon Williams, Dr. Max Thorek, Dr. William Henry Welch, Dr. Franklin P. Mall, Dr. Arthur E. Hertzler, Sir Robert Jones, and Dr. Louis Pasteur.

USE YOUR LIBRARY

PROMINENT PSYCHIATRIST TO SPEAK HERE APRIL 26TH

Dr. Don P. Morris, Professor of Psychiatry and Mental Health, University of Illinois, Champaign, Illinois, will be the visiting distinguished guest speaker for the Tulsa County Medical Society on Monday, April 26, 1954, at 8:00 P. M. at The Mayo. His paper will be entitled "Effective Methods of Referral to Psychiatrists."

Members of the Society will note that the April meeting is being held on the fourth Monday of the month rather than the customary second Monday. The April 26th meeting will conclude the Spring schedule of scientific programs. Due to the annual meeting of the Oklahoma State Medical Association being held in Oklahoma City, May 10-12, there will be no meeting of the Society in May. The Society will recess in June, July, and August, resuming regular meetings on Monday, September 14, 1954.

One of the best known of American psychiatrists, Dr. Morris obtained his pre-medical education from the University of Illinois and his Medical Degree from Yale University School of Medicine, Class of 1935. He interned at Harper Hospital, Detroit, Michigan, and subsequently served a year's residency in general medicine at Rutherford Hospital, Murfreesboro, Tennessee. Dr. Morris was a resident in Psychiatry at the University of Michigan, 1937-39, and in 1939 was appointed to the faculty as an Instructor in Psychiatry. He entered military service in 1942, serving as Chief of Medical Service for the 99th Evacuation Hospital, United States Army Medical Corps. After his discharge in 1946, with the rank of Lieutenant-Colonel, he joined the faculty of Southwestern Medical College, Dallas, Texas, and rose to Professor and Chairman of the Department of Psychiatry. From 1948 to 1952 Dr. Morris also served as Director of the Dallas Community Guidance Clinic. In 1953 he joined the University of Illinois as Professor of Psychiatry and Mental Health. At the close of the present school term he plans to re-enter private practice of Psychiatry at Dallas, Texas.

Dr. Morris is a diplomate of the

American Board of Neurology and Psychiatry, a member of the American Psychiatric Association, and a member of the American Ortho-Psychiatric Association. He is a former President of the Texas Council on Mental Health, the Texas Society for Mental Health, and the Texas Neuropsychiatric Association. For his wartime service he was awarded the Soldiers Medal and Bronze Star.

Following his appearance at the Tulsa County Medical Society, Dr. Morris will be one of four visiting guest speakers for the Third Annual Mental Health Institute on April 27th.

A brief business session will follow the scientific meeting. The speaker will be introduced by Dr. Joe E. Tyler.

MENTAL HEALTH INSTITUTE SCHEDULES THIRD SESSION

Tulsa's Third Annual Mental Health Institute, a one-day study course in adult adjustment problems, will be held at the University of Tulsa on Tuesday, April 27, 1954, with five prominent personalities in the field of mental health as visiting guest speakers.

Designed as a counseling course for physicians, ministers, social workers, nurses, psychologists, attorneys, teachers, and public health workers, the Institute will feature the following guest speakers:

Dr. Don P. Morris, Professor of Psychiatry and Mental Health, University of Illinois, Champaign, Illinois.

Dr. Rollin Fairbanks, Professor, Episcopal Theological School, and Director of the Institute of Pastoral Care, Massachusetts General Hospital, Boston, Massachusetts.

Mrs. Jennie Zetland, Chairman, Family Welfare Committee of the Welfare Council of Metropolitan Chicago, and prominent social worker of Chicago, Illinois.

Miss Opal Boston, President, National Association of School Social Workers, Indianapolis, Indiana.

Mr. Leib Richmond, Dean of Boys, Central High School, Tulsa, Oklahoma.

The Institute is jointly sponsored by the Tulsa Council of Social Agencies, Tulsa County Medical Society, Tulsa Council of Churches, Oklahoma State Health Department, Oklahoma Associa-

tion For Mental Health, Child Guidance Clinic of Tulsa, University of Tulsa, Tulsa Public Schools, Tulsa P-TA Council, Tulsa County Mental Health Council, the Juvenile Court of Tulsa, Family & Children's Service, Tulsa Academy of Neuropsychiatry and Neurosurgery, and the Eastern Oklahoma Chapter of the American Association of Social Workers.

All medical doctors are particularly invited to attend the sessions. The morning and afternoon sessions will be in the Student Activities Building of the University of Tulsa, and the Noon Luncheon will be at the University Methodist Church. The enrollment fee will be \$1.00, and lunch (optional) will be \$1.50. A complete program and enrollment form will be sent to all doctors early in April and additional copies may be obtained from the offices of the Tulsa County Medical Society, B-9 Medical Arts Building, Tulsa.

Dr. Joe E. Tyler is General Chairman of the Third Annual Mental Health Institute, assisted by Dr. Paul C. Benton, Dean L. S. McLeod, Mrs. P. G. Exline, Mrs. Sam H. Rhoades, Mrs. Charles Rogers, Mrs. E. R. Rector, Rev. James Cottrell, and Mrs. George Harrington.

Two previous Institutes held in 1952 and 1953 have been quite successful.

The program will be as follows:

9:15 A.M. Registration, University of Tulsa, Student Activities Building.

9:45 A.M. General Assembly, Dr. Joe E. Tyler, Presiding. Keynote address by Dr. Don P. Morris, Champaign, Ill.

10:20 A.M. Group Meetings as follows:

Group I, Dean L. S. McLeod, presiding, for ministers, physicians, social workers, psychologists and attorneys. Subject: "Various Approaches to Marriage Counseling." Speakers will include Dr. Rollin Fairbanks, Boston, Mass.; Dr. Don P. Morris; and Mrs. Jennie Zetland, Chicago, Ill.

Group II, Mrs. Mary Creekmore presiding, for teachers, principals, parents, nurses, and social workers. Subject: "Basic Principles of Children's and Adult's Adjustment Between Home and School." Speakers will include Miss Opal Boston, Indianapolis, Ind., and Mr. Leib Rich-



DR. DON P. MORRIS

Professor of Psychiatry, University of Illinois, Champaign, Illinois, makes two appearances in Tulsa this month: on Monday, April 26th, as guest speaker for the Tulsa County Medical Society, and on Tuesday, April 27th, as a member of the faculty of the Third Annual Mental Health Institute.

mond, Tulsa, Okla.

12:15 P.M. Luncheon, University Methodist Church. Rev. James Cottrell, presiding. "The Language of Relationships," an address by Dr. Rollin Fairbanks. Boston, Mass.

2:00 P.M. Group Meetings as follows:

Group I, Rev. Clarence Knippa presiding, for ministers only. Subject: "Pastoral Counseling." Speaker, Dr. Fairbanks.

Group II, Mr. Jack Paxton presiding, for parents and school personnel. Part A: "Family Adjustment as it Relates to School Behavior." Speaker, Dr. Morris. "Emotional Blocks to Learning." Speaker, Miss Boston. Part B: Question and Answer Period.

Group III, Miss Helen Lee Foster presiding, for social workers only. Subject: "Marriage Counseling," a case discussion by Mrs. Jennie Zetland, Chicago, Ill.

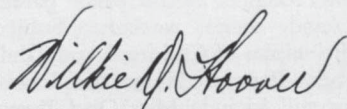
PRESIDENT'S PAGE

I have heard a considerable amount of comment, both pro and con, about the recent action of the Tulsa County Medical Society in abandoning its Building Fund and refunding the 1953 special assessment which initiated it. Opinion among the membership seems fairly well divided with a slight majority favoring the discontinuation of the project. The proponents of the proposal have been quite critical of the action, and one member, writing in a recent issue of The Bulletin, termed it "the most backward step the Society has ever taken."

From my discussions with some of those opposed to the Building Fund, I do not believe that there is any thought or desire on their part to hinder the normal progress of the Society. Many doctors felt that the project lacked definition. There were no plans as to the location of the proposed building, its size, cost, and method of finance. Another group believes that we can never build and operate our own building as economically as we can rent, which is probably true. It has also been pointed out that the profession is now migrating to other areas of the City to relocate their offices, and that any building should wait until the pattern of these trends is more firmly fixed; there is, after all, an essential necessity of locating such a building where it can best serve the greatest number of members. Some doctors feel that we have reached a maximum in the amount of money which we can put into our Society, our hospitals, specialty organizations, and other professional obligations. In light of changing and uncertain economic conditions, this is an important factor. There is even thought that to meet the accreditation requirements for our hospitals, that our Library should be merged with hospital libraries and not continue to duplicate such facilities.

I should like to suggest that we continue to give this idea of building careful study as a project which may or may not be eventually desirable. By resolving the various objections and differences of opinion, I believe that we can mature our thinking and eventually come to a more unified decision on the matter.

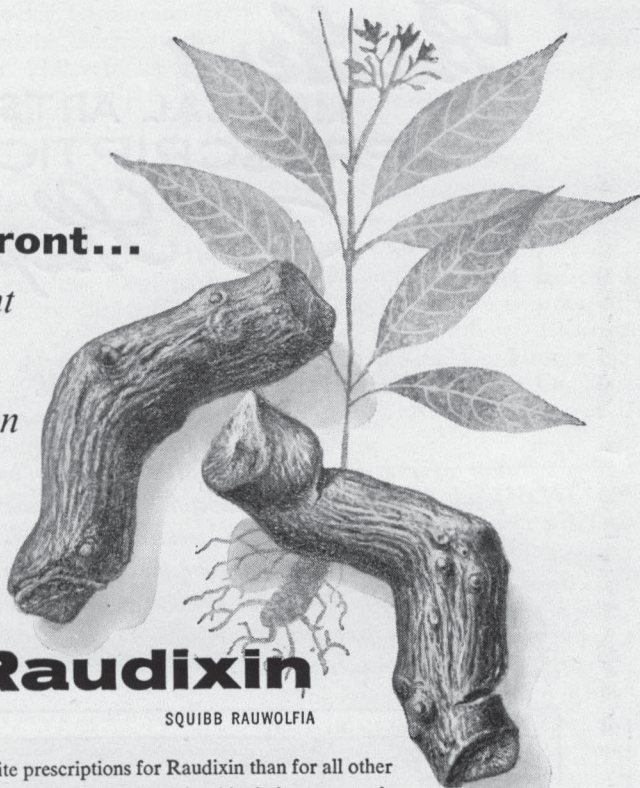
Sincerely,



President

Out in front...

*in treatment
of
hypertension*



Raudixin

SQUIBB RAUWOLFIA

More physicians write prescriptions for Raudixin than for all other forms of rauwolfia combined. The reasons for this choice are sound:

- Raudixin contains the standardized *whole root* of *Rauwolfia serpentina*. There is no definite evidence that any alkaloid or fraction has all the beneficial actions of the whole crude root.
- Raudixin lowers blood pressure moderately, gradually, stably. It also slows the pulse and has a mild sedative effect.
- Raudixin is the *safe* hypotensive agent. It causes no dangerous reactions and almost no unpleasant ones.
- Raudixin is often effective alone in mild to moderate hypertension of the labile type. In more severe cases it is effectively combined with other hypotensive agents.

50 and 100 mg. tablets, bottles of 100

SQUIBB

RAUDIXIN® IS A TRADEMARK

Prather's MEDICAL ARTS PRESCRIPTION Ⓡ Shop

In the Medical Arts Building

For over a quarter of a century we have been privileged to serve the doctor and his patients with a finer prescription service. To insure a reliable compounding of your prescriptions, telephone 4-0121. Prompt, courteous counter service or citywide free delivery.



— telephone 4-0121 —

CARDIOVASCULAR DISEASE CLINIC SET FOR APRIL 10TH

All Oklahoma doctors have been invited to attend a one-day Cardiovascular Disease Conference to be held Saturday, April 10, 1954, at Hillcrest Medical Center under the sponsorship of the Tulsa Academy of General Practice in cooperation with Wyeth Laboratories.

The program is designed to review basic principles of Cardiology and to delineate current problems in actual practice. In addition to presentations by five visiting guest speakers, the Conference will feature an out-patient clinic, motion pictures, and exhibits.

Guest speakers for the Conference will include:

Dr. Henry W. Winans, Emeritus Professor of Medicine, Southwestern Medical School, Dallas, Texas.

Dr. James Hammarsten, Chief of Medicine, Veterans Administration Hospital, Oklahoma City, Oklahoma.

Dr. Robert H. Bayley, Professor of Medicine, University of Oklahoma School of Medicine, Oklahoma City, Oklahoma.

Dr. Martin Leibovitz, thoracic surgeon, Tulsa, Oklahoma.

Dr. Robert O. Snyder, Assistant Professor of Medicine and Psychiatry, University of Oklahoma School of Medicine, Oklahoma City, Oklahoma.

The program is as follows:

7:30 A.M. Registration.

8:15 A.M. Introductory Remarks by Dr. William R. Turnbow, Chairman.

8:30 A.M. Motion Picture, "Development of the Normal Heart."

8:45 A.M. Motion Picture, "Acyanotic Congenital Heart Diseases."

9:00 A.M. Visit Wyeth Booth.

9:15 A.M. Out-Patient Clinic.

11:45 A.M. "Cardiac Murmurs-Pathologic Physiology," Dr. Henry M. Winans. "Cardiac Arrhythmias-Pathologic Physiology," Dr. Robert H. Bayley. (Patient demonstrations.)

12:30 P.M. Luncheon.

2:15 P.M. "Congestive Heart Failure, Therapy," Dr. Henry M. Winans.

2:45 P.M. "Coronary Artery Disease and Myocardial Infarction, Diagnosis and Treatment," Dr. Robert H. Bayley.

3:15 P.M. "Relation of Life Stress to Blood Clotting and Thrombophlebitis," Dr. Robert O. Snyder.

3:45 P.M. "Cardiac Emergencies," Dr. James Hammarsten.

4:15 P.M. "Study of Mitral Stenosis," Dr. Martin Leibovitz.

4:45 P.M. Motion Picture, "Cyanotic Congenital Heart Disease."

An exhibit on cardiac catheterization prepared by Dr. Ceylon S. Lewis of Tulsa will also be on display.

There will be no fee for the Conference. The program was arranged by Dr. William R. Turnbow, Chairman, Dr. Lowell L. Stokes, Dr. Horace H. Porter, Dr. Willard L. McGraw, Dr. Marshall O. Hart, Dr. L. A. Munding, and Dr. Earl M. Lusk.

NEW TULSA MEDICAL CENTER HOUSES NINE PHYSICIANS

Ranch Acres Medical Center, Tulsa's newest suburban professional building located at 31st and Harvard streets, opened April 1, 1954, with nine physicians and three dentists occupying space.

The ranch style building is of Colorado pink limestone with a heavy shale roof. A central lobby reception room is of Pennsylvania green limestone, featuring a fireplace 22 feet in width. Professional suites range from 600 to 800 square feet, each attractively decorated and with private reception rooms. Four more suites are available for rental.

Physicians moving to the new structure include Dr. Gifford H. Henry, Dr. Henry A. Brocksmith, Dr. Loren V. Miller, Dr. William S. Jacobs, Dr. Oliver H. Thompson, Dr. Terrell Covington, Jr., Dr. James W. White, Dr. J. K. Lee, and Dr. H. F. Mount, the latter from New Orleans, Louisiana. Dentists are Dr. Virgil H. Trotter, Dr. Jack D. Pigford, and Dr. Robert E. Wright. An informal open house for Tulsa doctors is planned early in April.

The building will also house a laboratory and x-ray service operated by the Arcade Medical Service and a prescription pharmacy operated by Mr. James F. Purdy, veteran Tulsa druggist.

GUEST SPEAKERS SET TITLES FOR OSMA ANNUAL MEETING

Dr. Philip B. Price, Professor and Chairman of the Department of Surgery at the University of Utah School of Medicine, Salt Lake City, Utah, is the latest addition to the list of visiting distinguished guest speakers for the scientific program of the 1954 Annual Meeting of the Oklahoma State Medical Association at Oklahoma City, May 10-12.

Dr. Price, currently serving as President of the Southwestern Surgical Congress, will speak on the subject, "Suture Materials and General Principles of Suturing Wounds." In addition, he will appear on a television wet clinic demonstrating "Breast Cancer-Operability, Diagnosis and Technique."

Titles of the papers of nine other visiting distinguished guest speakers have been announced by Dr. James E. Amspacher, Program Chairman, as follows:

Dr. J. Robert Willson, Professor and Chairman of the Department of Obstetrics and Gynecology, Temple University School of Medicine, Philadelphia, Pennsylvania: "Management of the 3rd Stage of Labor and Prevention of Post-Partum Hemorrhage" and a TV presentation, "Abdominal Hysterectomy."

Dr. Earl D. Osborne, Professor of Dermatology, University of Buffalo School of Medicine, Buffalo, New York: "A Therapeutic Armamentarium For General Practitioners" and "Treatment of Skin Infections."

Dr. C. Allen Good, Professor of Radiology, Mayo Clinic Foundation, Rochester, Minnesota: "Roentgenological Contributions to Diagnosis of Bronchogenic Carcinoma" and one other paper to be announced.

Dr. Virginia Apgar, Professor of Anesthesiology, Columbia University College of Physicians and Surgeons, New York, N.Y.: "Obstetrical Anesthesia in General Practice" and "Infant Resuscitation."



Dr. Apgar

Dr. J. Roderick Kitchell, Associate Professor of Medicine, University of Pennsylvania School of Medicine, Philadelphia, Pennsylvania: "Management of Patients With Coronary Athero-Sclerosis" and a TV presentation entitled "Rheumatic Heart Disease With Mitral Valvulitis."

Dr. John B. Hazard, Director of Pathology, Cleveland Clinic, Cleveland, Ohio: "Solitary Thyroid Nodule" and "Pulmonary Disease as Reflected in Lung Biopsy."

Dr. Fred M. Taylor, Associate Professor of Pediatrics, Baylor University College of Medicine, Houston, Texas: "Obscure Fevers in Infants and Children" and a TV presentation entitled "Convulsive Seizures."

Dr. H. Relton McCarroll, Assistant Professor of Orthopedic Surgery, Washington University School of Medicine, St. Louis, Missouri: "Practical Points in the Management of Common Fractures" and a TV presentation to be announced.

Dr. E. H. Parson, Associate Professor of Psychiatry, Washington University School of Medicine, St. Louis, Missouri: titles to be announced later.

A complete program will appear in the April issue of the Journal of the Oklahoma State Medical Association. In addition to papers by guest speakers and by members of the Association, the scientific program will feature a Clinical Pathological Conference on Wednesday, May 12, daily television clinics on May 10-11, and scientific exhibits.

Over 60 commercial exhibits will be on display at Municipal Auditorium, scene of the convention. A special three-day program has also been prepared for the Women's Auxiliary to the Oklahoma State Medical Association, and many specialty groups have announced meetings immediately before and during the annual meeting.

Desirable hotel accommodations for the Annual Meeting may be obtained by writing the Hotels Committee, Oklahoma State Medical Association, 1227 Classen Drive, Oklahoma City, Oklahoma.

DR. ARNOLD H. UNGERMAN has been elected to the Board of Directors of the Tulsa Council For Mental Health.

Announcing . . .

*Tulsa's Newest and Finest
Prescription Pharmacy
In Beautiful Ranch Acres Medical Center*

To serve the doctor and his patients with reliable prescription service, Mr. James F. Purdy announces the opening of PURDY'S RANCH ACRES PHARMACY in Tulsa's attractive new Ranch Acres Medical Center.

Our courteous and competent registered pharmacists will prepare your prescriptions from the most complete stocks of fresh drugs. Prompt free delivery. At your earliest convenience visit our modern new store.

Purdy's
**RANCH ACRES
PHARMACY**

A Distinctive Prescription Service

3102 SOUTH HARVARD

TELEPHONE 7-4550

APRIL MEDICAL CALENDAR

FRIDAY, April 2nd:

St. John's Tumor Clinic, Clinical Conference, 8:30 A.M.

MONDAY, April 5th:

Hillcrest Medical Center Staff Meeting, 8:00 P.M.

TUESDAY, April 6th:

St. John's Tumor Clinic, 8:00 A.M.

WEDNESDAY, April 7th:

Interns and Residents Lecture, St. John's Hospital, 6:00 P.M. Subject: "Intravenous Pyelography." Speaker, Dr. Berget H. Blocksom.

FRIDAY, April 9th:

Postgraduate Study Course in Pulmonary Diseases, University of Oklahoma School of Medicine, Oklahoma City, Oklahoma, 9:00 A.M. Continues through Saturday, April 10th.

St. John's Tumor Clinic, Clinical Conference, 8:30 A.M.

SATURDAY, April 10th:

Tulsa Academy of General Practice, Cardiovascular Diseases Conference, Hillcrest Medical Center, 8:15 A.M.

MONDAY, April 12th:

No Tulsa County Medical Society meeting on this date.

TUESDAY, April 13th:

St. John's Tumor Clinic, 8:00 A.M.

Tulsa Academy of General Practice, Scientific Meeting, Hotel Tulsa, 6:30 P.M. Subject: "Prevention and Treatment of Psychiatric Disorders in Children." Speaker, Dr. Paul C. Laybourne, Kansas City, Kansas.

WEDNESDAY, April 14th:

Board of Trustees Meeting, Tulsa County Medical Society, B9 Medical Arts Building, Tulsa, 1:00 P.M.

Interns and Residents Lecture, St. John's Hospital, 6:00 P.M. Subject: "Ectopic Pregnancy." Speaker, Dr. William F. Thomas, Jr.

Hillcrest Medical Center, Clinical Pathological Conference, 7:00 P.M.

FRIDAY, April 16th:

St. John's Tumor Clinic, Clinical Conference, 8:30 A.M.

Copy deadline for the May issue of The Bulletin.

MONDAY, April 19th:

St. John's Hospital Staff Meeting. Clinical Pathological Conference, 7:15 P.M., Staff Meeting, 8:00 P.M.

TUESDAY, April 20th:

Medical Assistants Society Meeting, Michaelis Cafeteria, 6:30 P.M.

St. John's Tumor Clinic, 8:00 A.M.

WEDNESDAY, April 21st:

Interns and Residents Lecture, St. John's Hospital, 6:00 P.M. Subject "Gastrointestinal Diseases." Speaker, Dr. Terrell Covington, Jr.

FRIDAY, April 23rd:

Staff Meeting, Children's Medical Center, 8:00 A.M. Subject: "Diagnosis and Treatment of Brain Damage." Speaker, Dr. Averill Stowell.

St. John's Tumor Clinic, Clinical Conference, 8:30 A.M.

MONDAY, April 26th:

Tulsa County Medical Society, Scientific Meeting, The Mayo, 8:00 P.M. Subject, "Effective Methods of Referral to Psychiatrists." Speaker, Dr. Don P. Morris, Champaign, Ill.

TUESDAY, April 27th:

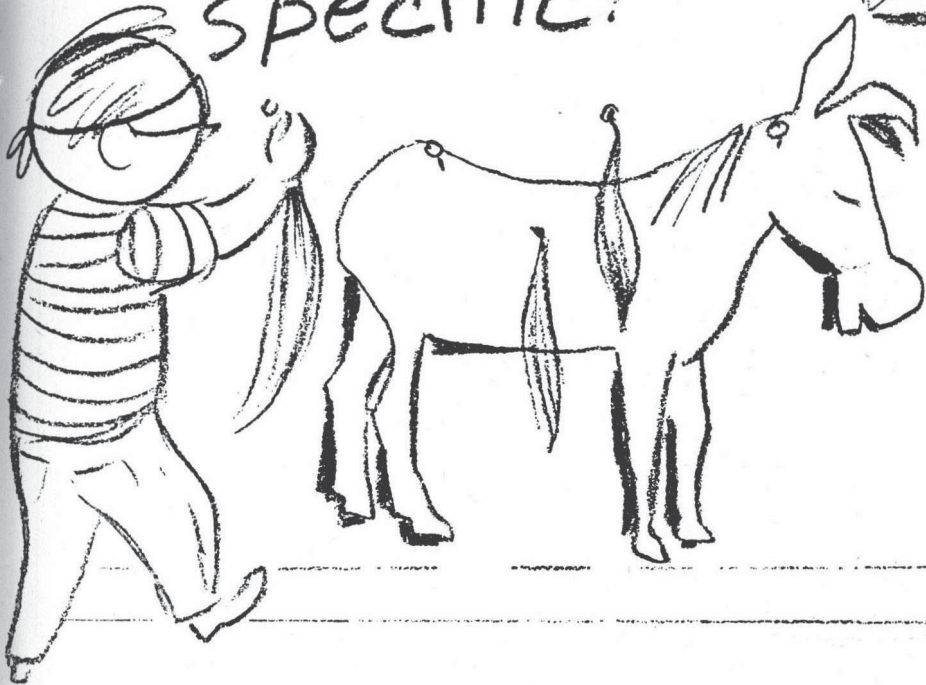
Third Annual Mental Health Institute, University of Tulsa, 9:00 A.M.

St. John's Tumor Clinic, 8:00 A.M.

WEDNESDAY, April 28th:

Interns and Residents Lecture, St. John's Hospital, 6:00 P.M. Subject, "Common Disturbances in Electrolyte Balance in Pediatrics." Speaker, Dr. Charles E. Brighton.

be
specific!



2.5 cc. Hypertussis is the Specific
in the treatment of whooping cough...

Cutter/2.5 cc. Hypertussis, a crystal-clear homologous protein, contains the gamma globulin equivalent of 25 cc. of human hyper-immune serum. This specific anti-pertussis fraction is concentrated 10-fold to obviate the pain and inconvenience associated with massive dosage—giving you the advantage of "a thimble full of dosage for a handful of baby."

2.5 cc. Hypertussis can be used concurrently with antibiotics which are often indicated primarily for secondary infections. Because 2.5 cc. Hypertussis is concentrated from human *venous* blood, allergic reactions are rare.

2.5 cc. Hypertussis is supplied in 2.5 cc. (one dose) vials, ready for immediate intramuscular injection.

*For whooping cough treatment or passive prevention
specify*

2.5cc. Hypertussis®

ANTIPERTUSSIS SERUM-HUMAN

CUTTER Laboratories

BERKELEY, CALIFORNIA



Representative: Hubert Fraker, 2128 Churchill Way, Oklahoma City, Ph. 8-4050

OFFICE SPACE

in

*Tulsa's Newest and Most Modern Shopping Center
Ideal Location for Clinic or Doctor's Offices*

ABUNDANT CONVENIENT PARKING

All major store space leased by leading merchants. Lease this air conditioned space NOW and have it arranged and decorated to suit your needs. Occupancy June 1st.

SHERIDAN VILLAGE SHOPPING CENTER

Admiral and Sheridan Streets

Telephone 4-1521

Prescription Excellence

Our reputation for the best in prescription compounding is your guarantee of reliable, courteous, and attractively priced service for your patient. We use only the finest in modern fresh drugs and insist upon individual attention to every prescription by our registered pharmacists. For prompt service just telephone 72-2469.

PROFESSIONAL DRUG SHOP

2110 South Utica

D. L. KINCAID
(Kinney)

WE DELIVER

RAYMOND EWERS

from the files of
THE GRIEVANCES COMMITTEE . . .

a case study

Editor's Note: This is another in a series of popular articles dealing with the work of the Grievances Committee of the Tulsa County Medical Society. The actual cases referred to have been carefully disguised to avoid identification of either doctor or patient. This series is published to acquaint physicians with the type of cases being brought to the attention of the Grievances Committee and the manner in which disposition is made.

In addition to hearing formal complaints, the Grievances Committee of the Tulsa County Medical Society frequently acts as an advisory body on medical and ethical problems submitted by the Blue Cross-Blue Shield Plans of Oklahoma and by various private insurance carriers. These problems are not submitted as actual complaints but rather as requests for information of a professional or technical nature. Situations involving medical ethics are also evaluated. The Committee renders only such information as may be requested and does not at any time make decisions upon the payment of insurance claims.

A few of these problems and their disposition have been outlined below and will be of interest to the practicing physician.

Case One: A surgeon performed an appendectomy at the same time repair of a hernia was made. The doctor had not previously discussed the appendectomy with the patient and performed it without the knowledge of the patient or his family. A claim was entered with the insurance carrier asking for payment of the established fee for both the hernia repair and the unauthorized appendectomy. The insurance carrier inquired if this was acceptable conduct by the physician concerned. *The Decision:* The Committee felt the surgeon acted most unwisely in removing the appendix without the knowledge and consent of the patient,

and noted the possibility of serious malpractice ramifications in such action. The Committee expressed the belief that an appendectomy should never be performed under such circumstances unless the pathology or attendant medical conditions indicated immediate removal to be desirable. The Committee felt such unauthorized and unnecessary surgery subjected the patient to unnecessary suffering and surgical risk and infringed upon his personal rights. It was also felt that the appendectomy was an unnecessary imposition upon the benefits of the insurance policy. When it was found that the pathology was negative, the insurance carrier declined to pay the fee for the appendectomy.

Case Two: An orthopedic surgeon performed two separate operations for the correction of a clubfoot condition, and filed for payment of the established fee for each operation. The insurance carrier inquired if such procedure was justified. *The Decision:* The Committee pointed out that good medical and surgical judgment frequently requires unilateral operations. It was noted that in most such cases each stage is an extensive surgical procedure in itself. The insurance carrier accepted the decision and paid both fees. It was pointed out to the Committee that some health and accident policies specifically provide for such situations.

Case Three: An insurance carrier received a claim for blood tests performed in the doctor's own office laboratory. The carrier advised the doctor that under the provisions of the policy payment was made for such procedures only when performed at a hospital. The doctor pleaded that mitigating circumstances existed in that the patient failed to advise him of such provisions in the insurance policy. The Committee was asked to comment on the situation. *The Decision:* The Committee felt that the insurance carrier

obviously had no responsibility to pay the claim. Similarly, it is questionable that the patient has any responsibility to advise the doctor of the terms of his insurance coverage, if any. (Many patients are almost completely unaware of the terms of their policies). Some doctors believe the patient should volunteer this information in order to protect the patient's rights more completely; others feel it is not a pertinent matter for discussion until such time as the charges have been presented. In the case at issue, the Committee concurred that it was the doctor's responsibility to ascertain such insurance information. In a comment upon the situation, the Committee further noted that the admission of patients to the hospital to capitalize upon in-patient benefits is not a desirable situation. This has the effect of overcrowding hospitals, penalizing insurance carriers for unnecessary related hospitalization costs, and in itself violates the basic purpose of health and hospital insurance—to guard against unexpected and catastrophic costs of illness. The net result of such indiscriminate admissions can only be constantly increasing premiums and an eventual breakdown of insurance protection as premium costs exceed family budgets.

Case Four: Mrs. A was injured in an automobile accident during early pregnancy. At the time of the injury her pregnancy benefits in a health and accident policy were not operative as she had not had the protection for the required period of ten months. As a result of the accident complications set in resulting in involuntary abortion. The physician filed for certain benefits normally accorded by the policy, basing his claim upon the allegation that the accident injuries were outside the normal course of events in pregnancy. The Committee was asked to comment upon the technical features of the situation. *The Decision:* The Committee felt this was a difficult situation to evaluate. On one hand, it was noted that the policy normally covered the costs resulting from accidental injuries; on the other hand, such costs would not have developed except for the patient's condition of pregnancy. The decision to be made was actually not one of a medical

character but rather of a legal nature. Asked to express an opinion on whether or not the claim should be paid, the Committee in this instance did recommend its payment as conducive to good public relations towards prepaid health and medical insurance care plans. The insurance carrier agreed and paid the claim on this basis.

Case Five: Following normal delivery, Mrs. A's ovarian tubes were ligated by the attending physician. This action was taken with the written consent of the patient and her husband, written permission of the hospital, and upon the certification of two qualified consultants that such action was desirable in the interest of the patient's health. The attending physician filed a claim for his services with the insurance company with which the patient was insured. The carrier refused to make payment, stating that it was "not in accord with its policy" to make payments for medical and surgical procedures which "do not enjoy moral recognition" by the general public. Pressed for payment, the insurance company agreed to have the matter reviewed by the Grievances Committee. *The Decision:* The Committee felt that good medical judgment as to what was best for the patient superseded any arbitrary policy the insurance carrier might have. It was noted that nothing in the insurance policy prohibited payments for this type of case. The Committee felt the operation was entirely legal and medically judicious, and that it had been tastefully and ethically handled. While the Committee did not deny that moral and religious considerations have led to a mixed public opinion on the matter, it did note that such operations must be done from time to time in the best interests of the patient's good health. For that reason, it felt that the doctor was unquestionably entitled to payment. The insurance carrier relented and paid the claim.

Case Six: Mr. A was admitted to the hospital for repair of a hernia five days after his health and accident insurance became effective. The attending physician filed for the established surgical fee. The insurance carrier protested that the hernia

(Continued on Page 30)

An Important Announcement

FOR THE FIRST TIME

ALL RISK PHYSICIANS AND SURGEONS INSTRUMENT FLOATER

Protect those expensive surgical and medical instruments against fire, theft, and damage at these unusually low premium rates. Virtual All-Risk Coverage.

A. OFFICE EQUIPMENT-INSTRUMENTS, MATERIALS, ETC.

First \$1,000	\$1.50
Next \$9,00075
Excess of \$10,00050

B. MEDICAL PROPERTY USUALLY CARRIED BY DOCTOR

First \$1,000	\$2.00
Excess of \$1,000	1.00

Rates are per \$100.00 of value

RICH AND CARTMILL

Wood and Bentley

109 WEST 4TH STREET

TELEPHONE 4-4173

CITIZENS BANK BUILDING

Clip and Mail The Coupon Today

To: Rich & Cartmill, 109 W. 4th, Tulsa

I would like further information on the new instrument floater.

Name _____, M. D.

Address _____ Ph. _____

ST. JOHN'S HOSPITAL TO BUILD NEW 200-BED UNIT

A public campaign for \$3,500,000 to construct a 200-bed addition was formally launched last month by St. John's Hospital of Tulsa. Already pledged in advance gifts is \$700,000, including \$250,000 contributed by members of the Tulsa County Medical Society.

Present plans call for the construction of a six-story addition to be built in the shape of a large "T" directly west from the front entrance of the Hospital. The cross of the "T" will extend approximately 200 feet north and south, facing Utica, with the main entrance at sidewalk level. The architectural design will conform to the present buildings.

The first floor will house a new outpatient department, emergency room, administrative offices, physical therapy rooms, new medical record library, doctors lounge, and medical library. The colored ward on the first floor will also be expanded by ten beds.

The second floor will have a new psychiatric department with 49 beds, while the third will house 37 additional beds for orthopedic and general surgery. The fourth floor will have a well baby nursery with 92 bassinets, a new 25-unit premature nursery, and increased bed space to provide for a total of 92 mothers.

The fifth floor will accommodate 35 new medical beds, and the sixth floor of the new wing will house a complete new surgery, pathology laboratories, 20 additional pediatric beds, and a 16-bed post-operative recovery room.

Plans for the general solicitation were not complete as this issue of The Bulletin went to press. The drive will be sparked by a group of Tulsa personalities including Mr. W. G. Skelly, Mr. R. K. Lane, Mr. Jay P. Walker, Mr. W. K. Warren, and Mr. Otis McClintock. The doctors division is under the direction of Dr. John E. McDonald. The campaign is the first public solicitation by the Hospital since its establishment 28 years ago.

DR. PAUL T. STRONG was guest speaker for the Washington-Nowata County Medical Society at Bartlesville, March 10, 1954.

DOCTORS TO PARTICIPATE IN POLIO VACCINATIONS

Members of the Tulsa County Medical Society will be asked to volunteer their services to a civic project which will see the vaccination of approximately 6,000 second grade schoolchildren with the new Salk Anti-Polio Vaccine. Officially endorsed by the Board of Trustees of the Society, the project is expected to begin in mid-April as part of a nationwide series of clinical tests of the vaccine.

Physicians will be asked to donate several hours of their professional time to the project. Complete details will be sent to all Tulsa County doctors early in April. Meantime, doctors are urged to encourage parents to permit vaccination of their children by pointing out that it involves no danger to child. Reactions or toxic results have not been noticed in extensive pre-clinical tests.

To assist the Tulsa City-County Health Department and the National Foundation For Infantile Paralysis in arranging details of the project, the Tulsa County Medical Society has appointed a special liaison committee composed of Dr. G. R. Russell, Chairman, Dr. Mary V. Graham, Dr. H. J. Rubin, Dr. Marcella R. Steel, Dr. L. A. Munding, Dr. James W. White, and Dr. Earl M. Lusk.

POSTGRADUATE COURSE IN PULMONARY DISEASES SET

The University of Oklahoma School of Medicine has announced a two-day Postgraduate Study Course in Pulmonary Diseases at Oklahoma City, April 9-10, 1954.

Guest instructors will include:

Dr. J. Burnes Amberson, Professor of Medicine, New York University School of Medicine, New York, N. Y.

Dr. Richard V. Ebert, Professor of Medicine, Northwestern Medical School, Chicago, Ill.

Dr. Thomas H. Burford, Professor of Surgery, Washington University School of Medicine, St. Louis, Mo.

DR. JAMES STEVENSON appeared on the program of the American Medical Association's Ninth Annual Conference on Rural Health at Dallas, Texas, March 4-6, 1954.

Upjohn

tablet tonic:
Cebēfortis Tablets

TRADEMARK, REG. U. S. PAT. OFF.

...and hematonic:
Cebētinic Tablets

TRADEMARK, REG. U. S. PAT. OFF.

Each Cebēfortis Tablet contains:

Ascorbic Acid.....	150.0 mg.
Thiamine Hydrochloride.....	5.0 mg.
Riboflavin.....	5.0 mg.
Pyridoxine Hydrochloride.....	1.0 mg.
Calcium Pantothenate.....	10.0 mg.
Nicotinamide.....	50.0 mg.
Folic Acid.....	0.75 mg.
Vitamin B ₁₂ Activity.....	2.0 mcg.

Bottles of 100 and 500 tablets

Each Cebētinic Tablet contains:

Ascorbic Acid.....	25.0 mg.
Thiamine Hydrochloride.....	2.0 mg.
Riboflavin.....	2.0 mg.
Pyridoxine Hydrochloride.....	0.5 mg.
Nicotinamide.....	10.0 mg.
Ferrous Gluconate.....	5.0 grs.
Folic Acid.....	0.67 mg.
Vitamin B ₁₂ Activity.....	5.0 mcg.

Bottles of 60 and 500 tablets

The Upjohn Company, Kalamazoo, Mich.

COMMITTEE ASKS GREATER MALPRACTICE PROTECTION

In a report to the Board of Trustees, the Insurance Committee of the Tulsa County Medical Society last month expressed fears that more than 50 per cent of the membership do not have malpractice liability insurance in adequate amounts. A spot check of 175 doctors covered by the official St. Paul-Mercury indicated that 90, or approximately 52 per cent, had coverage not in excess of \$30,000-\$90,000 limits.

Although noting that a substantial number of physicians had increased the limits of extended coverage of their policies in the last two years, the Committee again called for recommended coverage of \$50,000-\$150,000. The report pointed out that one Tulsa physician recently lost a malpractice suit for \$60,000 plus \$13,000 accumulated interest. Two suits filed against Tulsa doctors in the last ninety days are seeking \$139,000 in one instance and \$75,000 in the second. A suit now pending against an Oklahoma City doctor asks \$400,000. While such asking amounts are far in excess of usual judgments, recent experience has shown that

damages in \$50,000 are not uncommon. The trend of such judgments has definitely been towards greater increased amounts in recent years.

The breakdown of the sampling study of 175 Tulsa doctors indicates their limits of coverage as follows: \$10,000-\$30,000, seventeen; \$15,000-\$45,000, five; \$20,000-\$60,000, four; \$25,000-\$75,000, thirty; \$30,000-\$90,000, fourteen; \$50,000-\$150,000, fifty-eight; \$100,000-\$300,000, nine; \$150,000-\$500,000, eighteen.

Dr. F. L. Flack, Chairman of the Insurance Committee, noted in his report that the premium for \$10,000-\$30,000 coverage is \$52 per year. For coverage of \$50,000-\$150,000, the additional premium is \$21.60 or a total of \$73.60 per year. Maximum coverage of \$150,000-\$500,000 calls for a total premium of \$86.40. (Rates quoted are not adjusted for special liability, x-ray, radium, etc.)

The report noted a sizeable number of general practitioners were carrying only \$10,000-\$30,000 and recommended increases in coverage by members of that group.

BLUE CROSS INSURANCE NOW AVAILABLE TO ASSISTANTS

The Medical Assistants Group of Blue Cross Hospital Insurance is now accepting applications for new members at the offices of the Tulsa County Medical Society, B-9 Medical Arts Building, Tulsa. Applications must be received not later than April 10, 1954, for coverage beginning May 1, 1954.

Only bona fide employees (nurses, receptionists, stenographers, technicians, etc.) of members of the Tulsa County Medical and Dental societies are eligible to apply. Premiums are payable quarterly. Complete information and application cards are available at the Medical Society offices.

DR. BENJAMIN W. WARD and DR. THOMAS J. HARDMAN have been named to the Advisory Board of the Oklahoma State Child Welfare Service. They succeed DR. JOHN E. McDONALD and DR. THEODORE S. WILLIAMS, whose terms of office have expired.



DICK KELLO

*Invites You To
Patronize His Fine
Prescription Service
Free Delivery
Covering East Tulsa*

BALL DRUG STORE

College at Admiral

Ph. 6-2156, 9-9005

NOT ARTHRITIS BUT ARTHRALGIA...

If the patient complaining of aching joints is a woman between 37 and 54 years of age, it is highly possible that she is suffering from arthralgia rather than arthritis.¹ It has been estimated that arthralgia occurs in about 40 per cent of women with estrogen deficiency, and is exceeded in frequency only by symptoms of emotional or vasomotor origin.² In fact, arthralgia may be as indicative of declining ovarian function as the classic menopausal hot flushes.

Arthralgia, however, is just one of a vast number of distressing but ill-defined symptoms that may be precipitated by the loss of estrogen as a "metabolic regulator." Other good examples are insomnia, headache, easy fatigability, and tachypnea.

Because these symptoms sometimes occur years before or even long after cessation of menstruation, they are not always readily associated with estrogen deficiency, and the tendency may be to treat them with medications other than estrogen. Obviously, sedatives and other palliatives cannot be expected to produce a satisfactory response if an estrogen deficiency exists. Only estrogen replacement therapy will correct the basic cause of the disorder.

"Premarin" is an excellent preparation for the replacement of body estrogen. In "Premarin" all components of the complete equine estrogen-complex are meticulously preserved in their natural form. "Premarin" produces not only prompt symptomatic relief but a distinctive "sense of well-being" which is most gratifying to the patient.

1. Greenblatt, R. B., and Kupperman, H. S.: *M. Clin. North America* 30:576 (May) 1946. 2. McGavack, T. H., in Goldzieher, M. A., and Goldzieher, J. W.: *Endocrine Treatment in General Practice*, New York, Springer Publishing Company, Inc., 1953, p. 225.

“PREMARIN”



*Estrogenic substances (water-soluble) also known as conjugated estrogens (equine)
Available in tablet and liquid form*

has no odor... imparts no odor

NEW YORK, N. Y.



MONTREAL, CANADA

VERN REXALL DRUG

for

*Fast Free Delivery
for your patients
on the Sand Springs Line*

DIAL 3-3234

We'll do the rest

4902 SAND SPRINGS ROAD

TULSA

*Roadside Invitation
To Drive Refreshed*

DRINK
Coca-Cola 5¢
REG. U.S. PAT. OFF.

BOTTLED UNDER AUTHORITY OF THE COCA COLA COMPANY BY

BLOOD CENTER NEWS

DISTRIBUTION & REPLACEMENT REPORT

February, 1954

Hospital:	Bloods Used:	Replacements:	% Repl.
Hillcrest	296	208	70.3%
St. John's	513	221	45.0%
Tulsa Osteo.	0	4	
Osteopathic	63	36	57.1%
Mercy	11	10	90.9%
Moton	5	6	120.0%
Broken Arrow	17	2	11.8%
Byrne	24	4	16.7%
Other	13	38	292.3%
Totals	942	529	56.2%

Officials of the Tulsa County Red Cross Blood Center last month appealed to physicians and hospitals to be as sparing as possible in the use of Type O-Negative blood and to make a special effort to encourage its replacement by recipients or their relatives. Because of the property of O-Negative to mix with most other types of blood, it is frequently given when not absolutely necessary and when the actual matching type is available, officials believe. This tends to reduce the supply necessary for transfusing O-Negative patients. Doctors are urged to check the blood type on the patient's chart, especially prior to surgery, and to urge an immediate donation of blood by relatives (who will frequently be O-Negative in type also). On several occasions recently the Center has had to appeal for O-Negative blood to meet current needs. The number of donors with O-Negative blood is comparatively small.

The Tulsa County Red Cross Blood Center reports that the use of blood thus far in 1954 is running two per cent ahead of estimated needs. Fortunately, this increase has been offset by a two per cent increase in donations. The Center should average 1,000 pints monthly to meet current needs.

Reports continue to reach the Center that some doctors are under the impression that a charge is made for unreplaced blood or that it must be replaced in a two-to-one ratio. No charge is ever made for the blood and replacement is not



The surprised gentleman at the left is Philadelphia's distinguished proctologist, Dr. Harry E. Bacon. He has genuine cause for alarm for Oklahoma's famous Indian artist, Chief Acee Blue Eagle of Okmulgee (right), has just inducted him into the Creek Indian tribe, presented him with a war bonnet and a leather scroll. The ceremonies took place at the March 8th meeting of the Tulsa County Medical Society when Dr. Bacon was visiting guest speaker. Honorary Chief Bacon's new Indian name of He-Lis Ha-Yah Hull Wee, means "Medicine Man of Great Renown."

mandatory but voluntary. For a complete analysis of the Center's requirements doctors are referred to the booklet entitled "Blood Relations," recently distributed to all members of the Tulsa County Medical Society.

DR. MILFORD S. UNGERMAN has been elected President of the Tulsa Academy of Neuropsychiatry and Neurosurgery for the following year. Other officers include DR. JOHN F. GRAY, JR., Vice-President; DR. JOE E. TYLER, Treasurer; and DR. TOM R. TURNER, Secretary.

DR. H. D. MURDOCK was guest of honor at the Annual Doctor's Day Dinner of the Auxiliary to the Tulsa County Medical Society, March 27, 1954, at the Harvard Club.

DR. H. P. KEMMERLY is an applicant for membership in the American Society of Anesthesiology. He is being sponsored by DR. CARL H. GUILD, JR.

You may call or send your prescriptions to us with the knowledge and assurance that they will be properly handled . . . just as you have every right to expect.

VERLE SMITH'S PRESCRIPTION SHOP

In Brookside

Ph. 7-3387 — 3409 S. PEORIA

City Wide Delivery

Prescriptions Sick Room Supplies

Prescriptions

Efficiently compounded by our reliable registered pharmacists. Prompt, free delivery. Courteous service.

AL MUSICK DRUG STORE

529 North Denver

We Deliver

TELEPHONE 5-7288

GRIEVANCES COMMITTEE

(Continued From Page 22)

was pre-existing to the date of effective coverage, but in a signed statement the doctor denied this allegation. The company asked the Grievances Committee to review the case. *The Decision:* The Committee advised the insurance carrier to place the burden of proof on the patient and his doctor. At the same time it readily admitted that it was possible for the patient to acquire the hernia and undergo its repair after the effective date of the policy. The Committee felt that the carrier was well within its rights to insist upon proof that the condition was not pre-existing when such a small margin of time was concerned. The value in the decision lay in two factors: (1) that physicians must be able to prove pre-existence of the condition by medical records, and (2) the policy of requiring proof routinely in questionable cases would discourage chiseling on insurance benefits. In the case at issue, the patient was able to show that he suffered pain after doing heavy lifting in a machine shop, and had undergone a prompt diagnosis and corrective surgery. The claim was paid.

These cases illustrate some of the problems which insurance carriers bring to the Committee. To many physicians some will seem elementary and obvious of decision: yet, to insurance companies and their officials not fully acquainted with medical procedure, the problems are more real and significant.

In this advisory function the Committee not only eliminates the possibility of formal complaints but helps to maintain good public relations between doctor, patient and the insurance world through a judicious analysis of interesting problems and complications.

Speakers for the Central High School Pre-Med Club during March included DR. T. PAUL HANEY, DR. BETTY CONRAD, DR. WORTH M. GROSS, DR. SUMNER Y. ANDELMAN, and DR. MANUEL BROWN.

DR. PAUL E. CRAIG has moved his professional offices to an attractive new clinic building at 2732 East 15th Street, Tulsa.

tested

broad-spectrum therapy

Terramycin®

BRAND OF OXYTETRACYCLINE

established

an agent of choice

in the treatment of a wide range of infections due to gram-positive and gram-negative bacteria, spirochetes, rickettsiae, certain large viruses and protozoa.

known

clinical advantages

rapid absorption¹

wide distribution^{2,3}

prompt response⁴

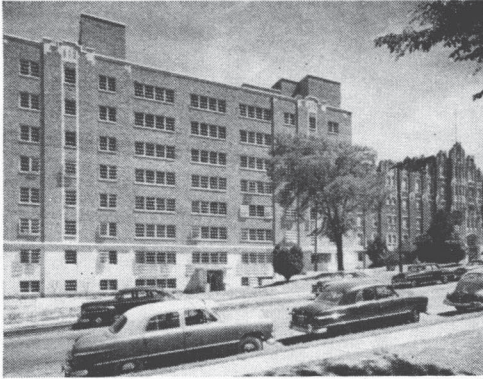
excellent toleration^{5,6}

1. Sayer, R. J., et al.: Am. J. M. Sc. 221:256 (Mar.) 1951.
2. Welch, H.: Ann. New York Acad. Sc. 53:253 (Sept.) 1950.
3. Werner, C. A., et al.: Proc. Soc. Exper. Biol. & Med. 74:261 (June) 1950.
4. Wolman, B., et al.: Brit. M. J. 1:419 (Feb. 23) 1952.
5. Potterfield, T. G., et al.: J. Philadelphia Gen. Hosp. 2:6 (Jan.) 1951.
6. King, E. Q., et al.: J. A. M. A. 143:1 (May 6) 1950.

Available in convenient oral, parenteral and topical forms.



PFIZER LABORATORIES, Brooklyn 6, N. Y.
DIVISION, CHAS. PFIZER & CO., INC.



Doctor

You are cordially invited to visit our beautiful new 135-bed addition and to inspect our new air-conditioned Nurses Residence, Polio Center, and remodeled facilities. These new facilities make Hillcrest Medical Center one of Oklahoma's finest hospitals.

HILLCREST MEDICAL CENTER

1653 East 12th Street, Tulsa

Ph. 3-2131

The COYNE CAMPBELL SANITARIUM

*announces the resumption of
its former name, beginning
January 1, 1954*

COYNE H. CAMPBELL, M.D.
Chief of Staff

Route 4, Box 65

Oklahoma City, Okla.

Telephone GA. 7-2441

Owned by the Oklahoma Medical Research Foundation

**PSYCHIATRIST SPEAKER FOR
GENERAL PRACTICE ACADEMY**

Dr. Paul C. Laybourne, Assistant Professor of Psychiatry at the University of Kansas School of Medicine, Kansas City, Kansas, will be guest speaker for the Tulsa Academy of General Practice on Tuesday, April 13, 1954, at Hotel Tulsa. His subject will be "The Prevention and Treatment of Psychiatric Disorders in Children."

Members will please note that the meeting is being held on a Tuesday instead of the usual Monday meeting date. Dinner will be served at 6:30 P.M. and the program will be at 8:00 P.M. Reservations for dinner may be made by telephoning 2-5904. All medical doctors are invited to attend.

Dr. Laybourne is a graduate of New York University School of Medicine, Class of 1944. He interned at Akron City Hospital and served two years in the United States Army Medical Corps. Following his discharge in 1947, Dr. Laybourne completed residencies in Psychiatry at University of Indiana Hospitals and at Columbia University College of Physicians and Surgeons. In 1951 he joined the faculty of the University of Kansas School of Medicine and is a member of the clinical staff of the Kansas Medical Center, Kansas City, Kansas. Dr. Laybourne is a diplomate of the American Board of Neurology and Psychiatry, member of the American Psychiatric Association, and a member of the Mid-Continent Psychiatric Association.

NEW BOOKLET PUBLISHED

A new booklet entitled "Services For Unwed Mothers," published by the Tulsa Council of Social Agencies, has been mailed to all Tulsa doctors. The booklet sets forth the sources in Tulsa which offer care and counseling service to unmarried mothers and pregnant women. Complete details of such services of several agencies are included. Additional copies are available from the Tulsa County Medical Society, B9 Medical Arts Building, Tulsa.

FOR RENT: Doctor's office, M.D. General Practice. Busy Whittier Square District. About 500 square feet. Telephone 2-9646.

**Telephone
Your Prescriptions—**

*For Prompt And
Accurate Compounding
By Reliable Licensed
Pharmacists*

Free Delivery

Telephone 7-7519

**BROOKSIDE
DRUG STORE**

3348 South Peoria

SPARTAN DRUG

6343 East Tecumseh

Telephone 8-4076

*Serving Spartan-
Douglas-American
Area*

**PRESCRIPTIONS SENT TO US
WILL BE PROMPTLY FILLED**

Two Pharmacists to Serve You

STEVE LAWRENCE

JOHN ADAMS

ST. JOHN'S HOSPITAL

*A Leading
Institution
In
Oklahoma
Medicine*

1923 SOUTH UTICA
TULSA, OKLAHOMA

TELEPHONE

7-3361

BUTLER DRUG STORE

6528 East King St

Phones

8-1080

8-4097

*A Professional Pharmacy
for Your Convenience
Serving Northeast Tulsa.*

YES, WE DELIVER!

NEW APPLICANTS

The following physician was elected to membership in the Tulsa County Medical Society at the regular meeting of March 8, 1954:

Robert G. Tompkins, M.D. 1324 Hunt Building, Tulsa. Pre-medical education, University of Washington. Medical Degree, Northwestern University School of Medicine, Chicago, Illinois, 1949. Interned King County Hospital, Seattle, Washington, 1948-49. Resident in Internal Medicine, King County Hospital, 1949-50. Resident in Internal Medicine, Mayo Clinic Foundation, Rochester, Minnesota, 1950-54. Specialty, Internal Medicine and Cardiovascular Diseases. Recommended by Dr. Earl I. Mulmed and Dr. Theodore Turnbull. By transfer from Olmstead County Medical Society, Minnesota.

The following physician is an applicant for membership in the Tulsa County Medical Society:

Samuel R. Turner, M.D. 1419 East 15th Street, Tulsa. Pre-medical education, Vanderbilt University. Medical Degree, Vanderbilt University Medical School, Nashville, Tennessee, 1951. Interned Vanderbilt University Hospital, 1951-52. Resident in Anesthesiology, Vanderbilt University Hospital, 1952-54. Instructor in Anesthesiology, Vanderbilt University Medical School, 1953-54. Member, American Society of Anesthesiology. Specialty, Anesthesiology. Recommended by Dr. H. P. Kemmerly and Dr. Carl H. Guild, Jr.

In the March issue of The Bulletin the medical school of Dr. Edwin R. Shapard was listed incorrectly as the University of Arkansas. Dr. Shapard's pre-medical education was obtained at the University of Arkansas and his medical degree at Tulane University School of Medicine, Class of 1944.

Vacationing in Hot Springs, Arkansas, last month were DR. BERGET H. BLOCKSOM and DR. ROBERT HALL JOHNSON.

T. ROY BARNES D R U G R Y

Prescription Specialists

RECOMMEND
WITH CONFIDENCE
FOR
PRESCRIPTIONS — SICKROOM SUPPLIES

Downtown
603 S. BOULDER
Phone 2-3118

• Eastside
44 N. HARVARD
Phone 6-1111

In hypertension . . .

A safer tranquilizer-antihypertensive

Serpasil^{T. M.}
(reserpine Ciba)

A pure crystalline alkaloid of Rauwolfia serpentina

No other rauwolfia product offers such

Unvarying potency / Accuracy in dosage / Uniform results

C I B A

Tablets 0.25 mg. and 0.1 mg.

HARVARD DRUG STORE

B. C. SHINN, Owner

PHONE 6-2186

*The
Suburban
Prescription
Store*

FREE
PRESCRIPTION
DELIVERY
3244 E. 11th St.
Tulsa

North and West

13TH AND MAIN

Telephone 4-3103

SCOTT ROBISON'S

Service

**PRESCRIPTION
STORES**

15TH AND LEWIS

Telephone 9-6393

South and East

PUBLIC POLICY PROGRAM

(Continued From Page 8)

national legislation. Dr. Walter B. Sanger's Legislative Sub-Committee will be in charge. The Sub-Committee inaugurated its work for the year with attendance at the AMA Regional Legislative Conference held at Dallas, Texas, January 30, 1954.

13. Distribute AMA literature and show AMA motion pictures where effective results can be obtained. Dr. Wadsworth's Sub-Committee will be in charge.

14. Develop further the indoctrination program for new members of the Society as begun last year by (a) periodic instructive luncheons or dinners for new Society members, (b) continued distribution of the informative booklets given to each new member, and (c) proper introduction of new members at Society meetings. Dr. A. B. Carney's Sub-Committee is also considering a proposal which, if approved, would give new members an assignment of a committee of their choice.

15. Blueprint a program to encourage greater participation in civic affairs by physicians. Assigned to Dr. Carney's Sub-Committee.

16. Study opportunities for the effective use of AMA exhibits. Assigned to Dr. Wadsworth's Committee.

17. Co-sponsor the Third Annual Mental Health Institute, April 27, 1954. (For details, see this issue of The Bulletin). The Society to be represented by Dr. Joe E. Tyler and Dr. Paul C. Benton.

18. Undertake a specific campaign on a health subject, such as weight reduction, and conduct an intensified publicity program utilizing speeches, radio and TV spots and programs, newspaper publicity, distribution of literature, etc. Assigned to Dr. Wadsworth's Sub-Committee.

19. Investigate possibilities of an exhibit at the Tulsa State Fair. Assigned to Dr. Wadsworth's Sub-Committee.

20. Attendance by Committee representatives at the AMA Public Relations conferences held several times each year.

A twenty-point public relations program developed last year by Dr. Perry's Committee saw sixteen of the twenty projects completed or in work.

For Beginning Head Colds—

Rhinall Cold Capsules

Useful in the Acute Coryza of Virus stage of Head Colds—for relief of Sneezing, Blockage and excessive Secretions—symptoms not relieved by the sulfonamides.

EACH CAPSULE CONTAINS

'Propadrine' Hydrochloride . . . 1/8 grain
(Phenylpropanolamine Hydrochloride)
Powdered Extract of Belladonna 1/8 grain
(Equivalent to 0.0015 gr. total Alkaloids)
Acetophenetidin 2 grains
Acid Acetylsalicylic 2 1/2 grains

In vials of 16 Capsules

*Detailed to the
Medical Profession Exclusively*

For Allergic Head Colds—

Rhinamin CAPSULES

afford welcome relief of the annoying symptoms associated with allergic head colds.



A combination of four effective ingredients for the symptomatic relief of nasal congestion, hypersecretion and headache associated with allergies, and allergic head colds.

EACH CAPSULE CONTAINS:

Pyrilamine Maleate 25 mg.
Ephedrine Sulfate 1/8 gr.
Atropine Sulfate 1/500 gr.
Salicylamide 2 1/2 gr.

In vials of 12 Capsules

Samples on Request

RHINOPTO COMPANY • Dallas, Texas



FEEDING LITTLE FOLKS

Parents of preschool children will like the common sense approach of this attractive 24-page booklet. Many true- to-life situations are discussed by Dr. E. F. McEnery, a leading pediatrician, Chicago, Memorial Hospital, and the co-authors.

We'll be happy to send you a free supply for your office or clinic.

DAIRY COUNCIL OF TULSA

312 Wright Building

Telephone 4-8280

Affiliated with National Dairy Council



The Emblem Of Approval

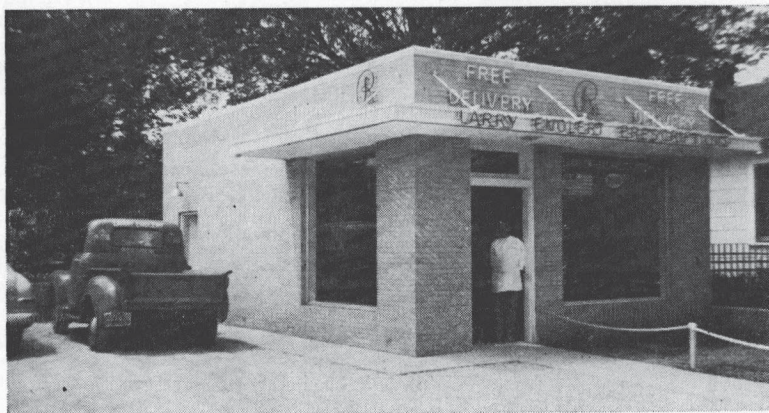
Owned and operated by the Tulsa County Medical Society, the Medical Credit Bureau offers an efficient reliable collection service at cost. More than 135 Tulsa doctors and dentists attest to its discreet collection abilities.

MEDICAL CREDIT BUREAU

Official Collection Agency of The Tulsa County Medical Society

B-9 Medical Arts Building

Telephone 3-6331



*The best in prescription service. Convenient free parking.
Prompt free delivery.*

LARRY ENGLERT PRESCRIPTIONS, INC.

Burnie L. Bevill, Manager

2526 East Admiral Pl.

Ph. 9-7736, 9-7743

Be Certain with Curtain

CURTAINS PRESCRIPTION LABORATORY

SIXTH AND BOULDER

PHONE 4-7116

Across the Street North From Medical Arts Bldg.

MEDICAL SERVICE SOCIETY OF TULSA

Membership Roster, Tulsa Chapter

<i>Name:</i>	<i>Representing:</i>	<i>Telephone:</i>
Jim Baughman	Schenley Laboratories	9-9165
William A. Cates	E. R. Squibb Co.	7-1267
J. P. Crawford	Armour Laboratories	6-3481
O. C. (Chuck) Chapman	Merck & Company	3-0654
Joe F. Chappell	Kremers-Urban	3-5237
C. R. Doran	Lakeside Laboratories	Claremore 1083
C. R. Eisenschmidt	Wm. S. Merrell Co.	72-2375
Verne L. French	Wyeth, Inc.	92-2443
R. C. Gooch	Abbott Laboratories	9-4389
J. L. Hedges	S. E. Massengill Co.	6-8538
Jerry Jeep	Lederle Laboratories	72-4365
C. M. (Mike) Kelly	National Drug Co.	9-9311
A. L. Kessler	Pitman-Moore Co.	5-7951
Dorwin Lamkin	Upjohn	7-1668
R. E. Loftus	Warren-Teed	7-1717
W. M. Mashburn	Lederle Laboratories	72-8275
R. T. (Bob) Mauch	Burroughs-Wellcome	7-4347
Ralph L. Miller	Hoffman-LaRoche	7-1878
A. M. Sayles	E. R. Squibb & Co.	72-1646
Tom Sellers	G. D. Searle	9-7361
Jim Southerland	J. B. Roerig & Co.	72-1907
Cecil Tredway	Wyeth Laboratories	9-0075
Bill Walker	Parke-Davis	9-8015
Preston Walker	Upjohn	7-6464
William A. Wilson	Baxter Laboratories	8-3846
H. L. (Jack) Wood	Wintrop-Stearns	72-8218

SPECIAL PURPOSE FOODS

LOW-SODIUM FOODS

LOW-CALORIE FOODS

DIABETIC FOODS

Phone 3-1106

Akin's

718 S. Boulder

Professional Directory

<p style="text-align: center;">S. Y. ANDELMAN, M.D. Diagnosis & Treatment of Arthritis & Rheumatic Diseases 1611 South Boston Ph. 2-3885</p>	<p style="text-align: center;">EUGENE S. COHEN, M.D. Obstetrics & Gynecology 1239 East 36th Pl. Ph. 7-7703</p>
<p style="text-align: center;">WILLIAM M. BENZING, JR., M.D. Diplomate American Board of Radiology 302 Medical Arts Bldg. Ph. 3-3044</p>	<p style="text-align: center;">SAFETY R. FIRST, M.D., F.A.C.C. Cardiology & Electrocardiology 1011 Medical Arts Bldg. Ph. 5-7545</p>
<p style="text-align: center;">BERGET H. BLOCKSOM, M. D. MAXWELL A. JOHNSON, M. D. Urologists Diplomates, American Board of Urology 517 Medical Arts Bld. Ph. 54-1888</p>	<p style="text-align: center;">SAMUEL E. FRANKLIN, M. D. General Surgery 1619 E. 15th Street Ph. 3-2109</p>
<p style="text-align: center;">MANUEL BROWN, M. D. Allergic Diseases 1619 E. 15th Street Ph. 54-5552</p>	<p style="text-align: center;">JOHN F. GRAY, JR., M.D. Neuropsychiatry 506 Medical Arts Bldg. Ph. 2-7039</p>
<p style="text-align: center;">EMIL M. CHILDERS, M.D. General Surgery 201 Stanolind Bldg. Ph. 2-5143</p>	<p style="text-align: center;">HARRY GREEN, M.D. Diseases of the Skin X-Ray & Radium Therapy 311 Medical Arts Bldg. Ph. 4-7585</p>

SPRINGER CLINIC

Sixth and Cincinnati

Tulsa

Medicine

D. O. Smith, M.D.
 E. G. Hyatt, M.D.
 H. A. Ruprecht, M.D.
 Albert W. Wallace, M.D.
 Vincel Sundgren, M.D.
 Dean C. Walker, M.D.
 Thomas H. Fair, M.D.
 Ernest W. Reynolds, Jr., M.D.

Neurology and Psychiatry

Tom R. Turner, M.D.
 Joe E. Tyler, M.D.

Pediatrics

G. R. Russell, M.D.

Telephone 5-6621

General Surgery

Carl J. Hotz, M.D.
 William Pratt, M.D.

Urology

K. F. Swanson, M.D.
 William F. Boyer, M.D.

Ear, Nose and Throat and Plastic Surgery

Donald L. Mishler, M.D.

Orthopedic Surgery

Charles E. Brighton, M.D.

Anesthesia

M. R. Steel, M.D.

Professional Directory

MARSHALL O. HART, M.D.

General Practice

1228 South Boulder Ph. 2-5904

MARTIN LEIBOVITZ, M.D.

Thoracic and Cardiovascular Surgery
 Certified American Board of Surgery
 and Board of Thoracic Surgery

812 Medical Arts Building Ph. 3-8722

JAMES W. KELLEY, M.D., F.A.C.S.

Plastic and Reconstructive Surgery
 Diplomate, American Board
 Of Plastic Surgery

206 Philtower Bldg. Tulsa

C. S. LEWIS, JR., M.D.

Internal Medicine

501 Medical Arts Bldg. Ph. 54-2778

WALTER S. LARRABEE, M.D.

X-Ray Diagnosis & Therapy
 Radium Therapy

411 Medical Arts Bldg. Ph. 4-3111

E. N. LUBIN, M.D.

Diplomate, American Board of Urology
 Genito-Urinary Diseases
 303 Medical Arts Bldg.

Office Ph. 3-6008 Res. Ph. 7-4388

MARION K. LEDBETTER, M.D.

Diplomate, American Board of Pediatrics

1453 S. Quaker Ph. 3-4332

VANCE LUCAS, M. D.

Thoracic and General Surgery
 Diplomate, American Board of Surgery
 and Board of Thoracic Surgery

Medical Arts Building Ph. 3-5513



TULSA CLINIC

915 South Cincinnati

Surgery

Andre B. Carney, M.D.,
 F.I.C.S., F.A.C.S.

James H. Neal, Jr., M.D.
 American Board of Surgery

Medicine
 H. W. Ford, M.D.

Cardiology and
 Internal Medicine
 James C. Peters, M.D.

COMPLETE
 CLINIC
 FACILITIES

Telephone 4-0177

Miss Bettye Adams
 Director

Neurology and
 Internal Medicine
 O. L. Hill, M.D.

X-Ray and
 Gastro-enterology
 Earl M. Lusk, M.D.

Internal Medicine
 Craig S. Jones, M.D.

Dentistry
 J. Thurman Gamble, D.D.S.

Professional Directory

<p style="text-align: center;">JAMES D. MARKLAND, M.D. Allergy 411 Medical Arts Bldg. Ph. 4-3111</p>	<p style="text-align: center;">HERSCHEL J. RUBIN, M.D. LEONARD L. KISHNER, M.D. Diplomates, American Board of Pediatrics Diseases of Infants & Children 1916 South Utica Tulsa</p>
<p style="text-align: center;">RALPH A. MCGILL, M.D., F.A.C.S. Surgery-Radium 1010 Medical Arts Bldg. Ph. 4-4215</p>	<p style="text-align: center;">J. D. SHIPP, M.D. Surgery and Diseases of the Colon and Rectum 708 Medical Arts Bldg. Tulsa</p>
<p style="text-align: center;">EDWARD L. MOORE, M.D., F.A.C.S. Surgery Diplomate, American Board of Surgery 215 Braniff Bldg. Ph. 3-4789 Res. Ph. 7-1623</p>	<p style="text-align: center;">W. A. SHOWMAN, M.D. Dermatology 408 Medical Arts Bldg. Ph. 3-7789</p>
<p style="text-align: center;">IRON H. NELSON, M.D. Clinical and Surgical Pathology 1107 Medical Arts Bldg. Tulsa</p>	<p style="text-align: center;">WADE SISLER, M.D. Orthopedic Surgery 8th & Elgin Ph. 5-3123</p>
<p style="text-align: center;">MARQUE O. NELSON, M.D. Practice Limited to Dermatology Radium and X-Ray Therapy 510 Medical Arts Bldg. Tulsa</p>	<p style="text-align: center;">CHARLES G. STUARD, M.D. Ophthalmology 221 Court Arcade Bldg. Ph. 4-3435</p>
<p style="text-align: center;">L. C. NORTHRUP, M.D., F.I.C.S. Gynecology & Obstetrics 1307 S. Main Ph. 3-0151</p>	<p style="text-align: center;">LEON H. STUART, M.D., F.A.C.R. X-Ray Diagnosis 1107 Medical Arts Bldg. Ph. 54-5348</p>
<p style="text-align: center;">THE ORTHOPEDIC CLINIC 619 South Main Street Tulsa Practice Limited To Bone & Joint Surgery JOHN E. McDONALD, M.D. FRANK A. STUART, M.D. JOHN C. DAGUE, M.D.</p>	<p style="text-align: center;">TURNBOW & RAY CLINIC Surgery - Diagnostic and Therapeutic Blocks 3015 E. 15th Street Ph. 9-6397 Ph. 9-6398</p>
<p style="text-align: center;">WILLIAM J. OSHER, M.D. Internal Medicine 706 Medical Arts Bldg. Ph. 4-9025</p>	<p style="text-align: center;">ARNOLD H. UNGERMAN, M.D. MILFORD S. UNGERMAN, M.D. Diagnosis & Treatment of Nervous and Mental Diseases 404 Medical Arts Bldg. Ph. 2-3151</p>
<p style="text-align: center;">SIMON POLLACK, M.D., D.A.B.R. Diagnostic and Therapeutic Radiology 316 Braniff Bldg. Ph. 2-7517</p>	<p style="text-align: center;">R. M. WADSWORTH, M.D. Pediatrics 1445 S. Quaker Ph. 3-4300</p>