



This monthly e-newsletter provides information regarding new services and resources. We encourage you to share this monthly e-newsletter with your colleagues. If you have any questions or feedback, please [contact us](#).

Thank you for reading.



IMPACT CHALLENGE

Just as we're winding down the OU Impact Challenge activities for this semester, we're gearing up for more topics and workshops next semester! Here's what you can expect to see over the next few weeks:

- [Understand Open Licenses](#): Open licenses allow you to invite specific uses of your work, which may help it spread much further than you could do on your own. We'll also be covering these important concepts in our [last workshop for the semester](#) on December 7.
- [Get Your Research to the Press](#): Getting your work into mainstream media means wider exposure for your articles and getting your work into the hands of patients, policy makers, and other populations who need it the most.

You can sign up for the weekly OU Impact Challenge email and catch up on activities you may have missed this semester by going to libraries.ou.edu/impactchallenge.



News



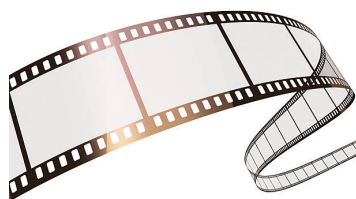
Alternative Textbook Grant

OU Libraries helps instructors customize course materials to fit their needs through the Alternative Textbook Grant. These grants support instructors who seek to adopt, modify, or create [open educational resources](#) (OER) that are free to students. OER gives instructors the power to customize content while relieving students of the economic burden of purchasing course materials. In the last five years, the [Alternative Textbook Grant has saved OU students \\$2.3M and open educational resources have saved students \\$1B globally.](#)

Grant applications will be open from January 2, 2019 through February 22, 2019. Learn more about [open educational resources](#) and the [Alternative Textbook Grant](#) at open.ou.edu.

Streaming Video Access

Instructors planning to use Kanopy streaming video for spring 2019 classes are urged to contact the Libraries before the spring semester begins to ensure video access is enabled for their classes. Due to budget restrictions, the Libraries have moved from on-demand to mediated video access; contact [Sara Huber](#), acquisitions librarian, to confirm video access for classes.



Featured Resources

Consultation Rooms

[Consultation rooms](#) are available in the Zarrow Family Faculty & Graduate Student Center on lower level 2 of Bizzell for faculty and graduate students to meet with



undergraduate students. Each room includes a table and multiple chairs, and most include white-boards.

Events



ArcGIS Story Maps Workshop

December 7, 12–1 p.m., [Digital Scholarship Lab, Conference Room \(LL121E\)](#)

Story Maps are a great way to combine maps with narrative text, images, and multimedia content to create compelling, user-friendly web apps. Join us for a hands-on workshop that will provide the basic steps for getting started and will highlight some student projects as examples.



The Carpentries teach foundational coding and data science skills to researchers worldwide. Hands-on workshops cover basic concepts and tools, including program design, version control, data management, task automation, and fundamental data skills. Participants are encouraged to help one another and to apply what they have learned to their own research problems and workflows.

The full 2018-2019 schedule and sign-up link are available on [our website](#). We encourage interested faculty to sign up and bring their research groups too!

The next workshops are:

- **Software Carpentry with R**
December 19-20, 9:00 a.m.–4:30 p.m.
[Active Learning Classroom](#)
- **Software Carpentry with Python**
January 8-9, 9:00 a.m.–4:30 p.m.
[Active Learning Classroom](#)



Bizzell will be open for extended hours through Finals Week. Please [check our website](#) for more information about our hours through the new year.

FINALS WEEK

Friday, Dec 7
Saturday – Thursday
Friday, Dec 14

December 7 – 14

7:30am – 24 hours
24 hours
12:00am – 9:00pm

WINTER BREAK

Dec 23 – Jan 1
Dec 26 – 28
Dec 29

December 23 – January 1

Closed
7:30am – 8:00pm
10:00am – 5:00pm

See all news, events, featured stories and more at

Libraries.ou.edu



Want to change how you receive these emails?
You can [update your preferences](#) or [unsubscribe from this list](#).