



This monthly e-newsletter provides an at-a-glance preview of our upcoming events, grant deadlines and an overview of new services and resources.

We encourage you to share this monthly e-newsletter with your colleagues. If you have any questions or feedback, please [contact us](#). Thank you for reading.

Announcements

Unpaywall Makes Articles More Widely Available

The Libraries has installed [Unpaywall](#) on public computers throughout all OU Libraries. Unpaywall, a browser extension for Chrome and Firefox, finds legal, open access versions of paywalled journal articles. OU faculty and students already have access to a tremendous number of journal articles via OU Libraries subscriptions. Unpaywall provides access to even more when you use a computer in the Libraries or download the extension to your own computer.

You can find out more about Unpaywall by visiting [their website](#), reading their [FAQ](#), or reading one of the articles in [Nature.com](#) or [The Chronicle of Higher Education](#).



Exhibit Opening: Poetics of Invention

Now open on the main floor of Bizzell, the *Poetics of Invention* exhibit explores the process of invention from ideation, to fabrication, and to commercialization. Follow OU professor Jonathan Stalling as he attempts to make English more accessible to the 350 million Chinese learners by merging the world's two most-spoken languages at the level of their phonetic DNA.



Learning Lab Welcomes Partners

The University Libraries Learning Lab supports regular outreach hours from several campus partners. The fall 2017 partners and their outreach hours are:

Writing Center:

- Sun - Tues, 5:00 p.m. - 8:00 p.m.

History Hub (History Dept. and the Writing Center):

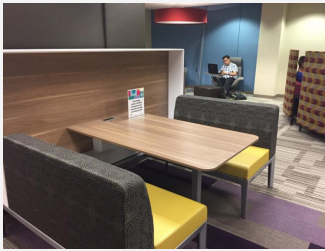
- Wed, 5:00 p.m. - 8:00 p.m.

UC Action:

- Sun - Thurs, 6:00 p.m. - 9:00 p.m.

Office of Undergraduate Research (OUR):

- Tues - Wed, 4:00 p.m. - 6:00 p.m.



In Focus: Geospatial Information Systems

Did you know that the University Libraries employs a GIS specialist? Jeff Widener, GIS Librarian, is available to consult if you have research questions that can benefit from analysis or visualization of a spatial component. Examples: migration patterns, Jamaican slave revolt, education.



Streaming Video

Streaming video content is available from the University Libraries via Kanopy, Alexander Street Press, and the Academic Video Store. Kanopy and Alexander Street Press items are available for immediate streaming. Items available at the Academic Video Store may be requested for streaming by contacting your library liaison.

Funding Opportunities

DATA Grants

OU Libraries' DATA (Data Acquisition and Transmission Award) grants are available to all OU-Norman affiliated faculty, staff and students. The grants are used to acquire data sets for use in research or instruction, up to \$5,000. Preference is given to applications which result in the permanent acquisition of unrestricted-use data sets. **The fall 2017 application deadline is October 1.**

Upcoming Events

Poetics of Invention Lecture Series

In conjunction with our new exhibit, *Poetics of Invention*, several public lectures will be hosted in Bizzell from 10:30-11:45 a.m. on the following Wednesdays in September and October:

- **Sept. 14, LL118:** Matt Cook, "Inventing an Academic



- Career"
- **Sept. 21, Room 339:** Todd Marshall Fuller, "Keep your eye OFF the Ball: Invention from Poetry to the Tribal College Movement"
- **Sept. 28, Room 339:** Crag Hill, "Opening the Page: Invention/ Visual Poetry"
- **Oct. 5, Room 339:** Andrew Pollock, "From Invention to Commercialization through the OU Innovation Ecosystem"
- **Oct. 12, Room 339:** Chris Corbett, "The Patent Process"



The Research Bazaar (ResBaz) returns to OU October 5-6. ResBaz is a worldwide festival promoting the digital literacy emerging at the center of modern research. The aim of these events is to equip researchers from all career stages with the digital skills and tools to do their research better, faster and smarter. [View the schedule](#) for a list of this year's workshops and presentations.

Bizzell Fall Semester Hours



August 20 – November 25

Sunday noon to 2:00 a.m.

M-Th 7:30 a.m. to 2:00 a.m.

Friday 7:30 a.m. to 9:00 p.m.

Sat 9:00 a.m. to 9:00 p.m.

Labor Day Weekend

Fri, Sept 1 7:30 a.m. to 8:00 p.m.

Sat, Sept 2 9:00 a.m. to 8:00 p.m.

Sun, Sept 3 closed

Mon, Sept 4 noon to 2:00 a.m.

Thanksgiving Break

Tues, Nov 21 7:30 a.m. to 10:00 a.m.

Wed, Nov 22 7:30 a.m. to 5:00 p.m.

Thurs, Nov 23 closed

Fri, Nov 24 7:30 a.m. to 5:00 p.m.

Sat, Nov 25 10:00 a.m. to 5:00 p.m.

Sun, Nov 26 noon to 2:00 a.m.

Prep and Finals Week

Sun, Dec 3 noon to Fri, Dec 15 at 9:00 p.m.