

Creating a campus-wide research data services committee: The good, The bad, and The...

Part 1: Building Bridges and Planting Seeds

Cinthya Ippoliti, Renaine Julian, Amy Koshoffer

Setting the stage

1. Institutional examples-stages of evolution but not necessarily the same ending!

1. Best practice tips for initiating conversations

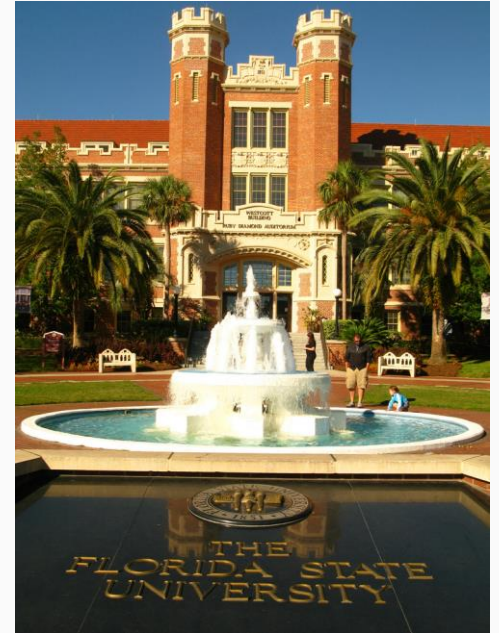
Building Strategic Partnerships in Research Data Management Services

Perspectives from Florida State University Libraries



Florida State University

- R 1 Institution
- \$200.8 million in contracts and grants brought in by faculty in 2015
- FSU Libraries ~ 44 faculty librarians



Beginnings of RDM Support

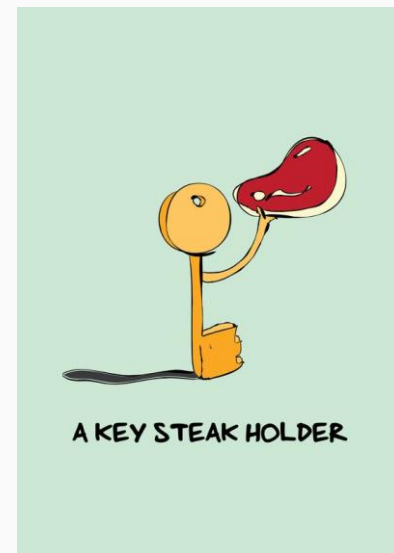
- 2011 - Task Force Exploring Open Access
2012-2013 development of ScholComm Program
- Data Research Librarian hired April 2014
- Requests from Office of Proposal Development (Office of Research)
- Bi-weekly brainstorming meetings (Scholarly Communication and Data Librarian)



FSU's Strozier Library

Identifying Stakeholders

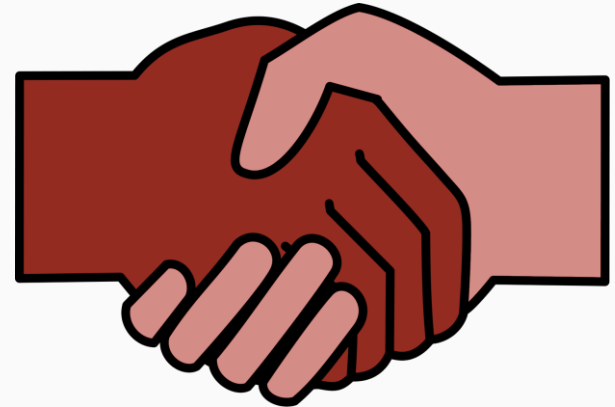
- Office of Research
- Office of Proposal Development
- Graduate School
- Research Computing Center
- Subject Librarians!



Source: [Igor Pancaldi, Pinterest](#)

Outreach Strategies

- FOP-Op
- Office of Proposal Development Newsletter
- Subject Librarians
- Word of Mouth!



Source: <https://blog.wikimedia.org/2015/04/14/single-user-login-for-all-wikis/>

FOP-Op: An overview

- FOP-Op = Funder Open Policies Operation
- Outreach “sprint” from January until April
- Goals: increase awareness on campus about public access requirements and new services and support the Libraries provide around these mandates

FOP Op (Funder Open Policies Operation)

Over the past few months several major funding agencies, including the National Science Foundation, the Bill and Melinda Gates Foundation and the Department of Defense, have passed mandated open policies for their funded research. What this means is that many of the faculty and grad students here at FSU will soon be required to make their journal articles and data sets openly available to the public. This is a major shift in the default research culture, and University Libraries have a great opportunity to provide information, resources and support as the campus adjusts to these requirements.



Fop-Op: The nuts and bolts

First meeting in January 2015

- Members: Data Librarian, Scholarly Communication Librarian, STEM Librarians, Medical Librarian, Outreach Coordinator, Marketing Coordinator
- Activities/Work Completed: Website banner, libguide, website, marketing plan, blog post(s), slide decks, training materials for subject librarians

Growth Areas for RDM Support

More Collaboration!

- Research Data Management Working Group
- New Outreach Strategies: Labs, Research Centers & Institutes



Creating a Campus Wide Steering Committee for Research Services

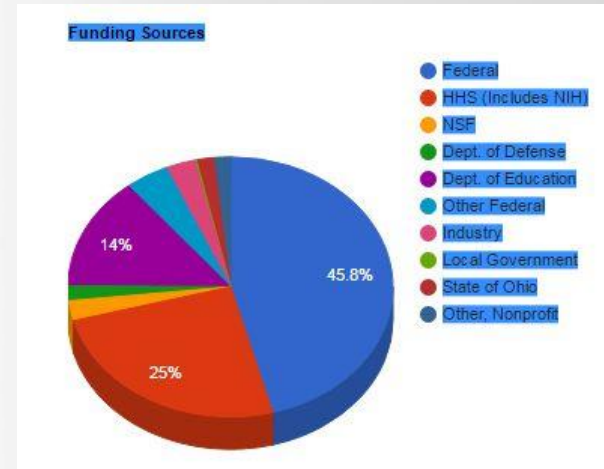
A perspective from the University of Cincinnati



What does research look like at the University of Cincinnati?

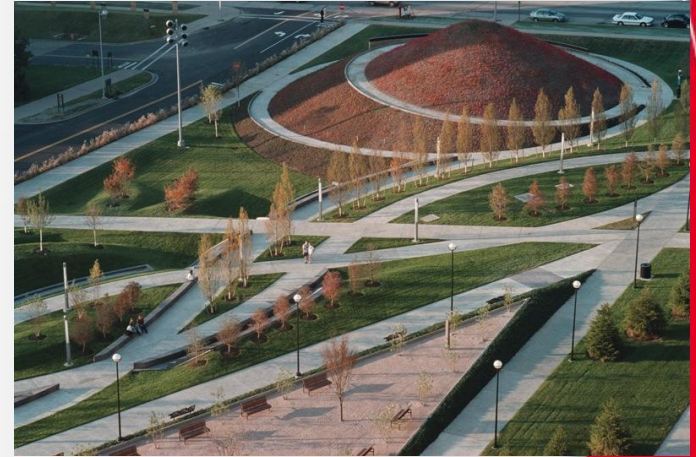
Understanding the Environment

- R1 institution
- 2015 - received \$396,812,015 in funding
- 44,338 students (5,402 graduate and professional)
- Master's Programs - (M.A., M.S., MBA, etc.) 111
- Doctoral Programs - (Ph.D., D.Sc., etc.) 79
- Faculty Full Time 2,832
- Faculty Part Time 3,823
- Library faculty/total staff 35/110



Challenges

- **History**
 - **Role of library**
 - **Relationships with and between interested parties**
 - **Previous efforts**
- **Silos across campus**
- **When it is effective to consolidate resources or work independently**



Sigma Sigma Commons at UC

Considering Areas of Need

Understanding the Environment at each level of the organization

- **College** _____
 - **Departments** _____
 - **Principal Investigators** _____
- Accreditation
 - Resource allocation
 - Volume of data generated
 - Data back-up – lack of back-up
 - Data integrity issues due to research group personnel turnover
 - Interest in open data



Enterprise perspective and support

- **Interest in open data**
 - Provost interest in Open Access/Open Data
 - Dean Xuemao Wang on SPARC steering committee
- **Provost office awards universal provider grants**
 - Library Grants

Data Carpentry workshops

ELN pilot project



Van Wormer Library, circa 1905



Provost's Office 2006

Rethinking staffing in the library and in other offices

- **Position of Informationists
(Data Management Librarians - first hired April 2014)**

- Researcher Services is in the job description
- Networking - Outreach and Embedded at the same time
- Hiring a Social Science and Business Informationist soon



- **Dual appointment in UC Office of Research and UC Libraries:**

- Assistant Vice President of Integrated Research / Head of DAAP Library

- **Dual appointment in Department of English and UC Libraries (51%/49% - 1 faculty)**

- Co-director of new Digital Humanities and Scholarship Center

- **Dual appointment between UC Digital Media Center and UC Libraries (90%/10% - 2 faculty)**

- **Scholarly Communication Strategist**

The Beginning of Researcher Services for Data Support...

- **UC Libraries Strategic Initiatives (2014)**
 - Data management has been a library-led and driven effort
 - Part of larger effort to build partnerships
- **These efforts incorporate existing partnerships such as with UC Information Technology**
- **Initiative teams include research and teaching faculty**
 - GIS working group of RSSI – Department of Geography faculty member
 - Digital Humanities – Several faculty members including a faculty member who has a joint appointment in the Department of English and UC Libraries



UC Libraries Strategic Initiatives:

Support for the UC Researcher: Developing a Suite of Programs

Purpose:

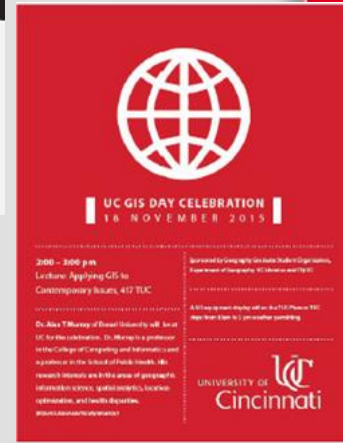
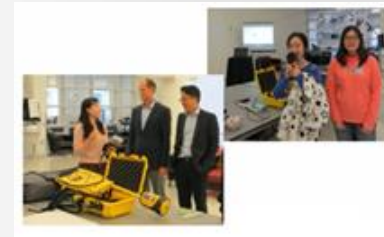
Define and develop a responsive, cohesive, scalable and sustainable suite of programs that support UC researchers at all levels and across all disciplines, and that integrate and complement the comprehensive scope of research programs in the evolving UC Research Hub.

Objectives & Deliverables:

- Define the scope and resource needs for near-term and potential long-term UC Libraries programs supporting researchers in such areas as: data management and grants consultation, analytics, visualization, coding and statistical support, GIS and public dataset support, repository and digital scholarship services
- Create “research ready” spaces and technology, including key software and hardware. Enhance the web presence, guides, online tools, classes and instruction for researchers concerning all potential components in the suite of programs

Outcomes of Strategic Initiative Researcher Services for Data Support...

- **Environmental Survey**
- **Data management workshops**
 - **various formats, targeted to each audience, different venues including departmental seminars**
- **ORCID Pilot Project**
 - **Working with UCIT**
- **Events -**
 - **COS workshop, UC Data Day 2016, GIS Day 2015/2016, Data Carpentry Workshop**
- **Conversations with researchers on a more personal level about their data**
- **Partnerships**



Building Community

Events

- **Data Day 2016 (2017 is in planning stages)**
 - libapps.libraries.uc.edu/blogs/dataday/
 - Included a faculty panel and a service providers panel represented by groups that provide research data support



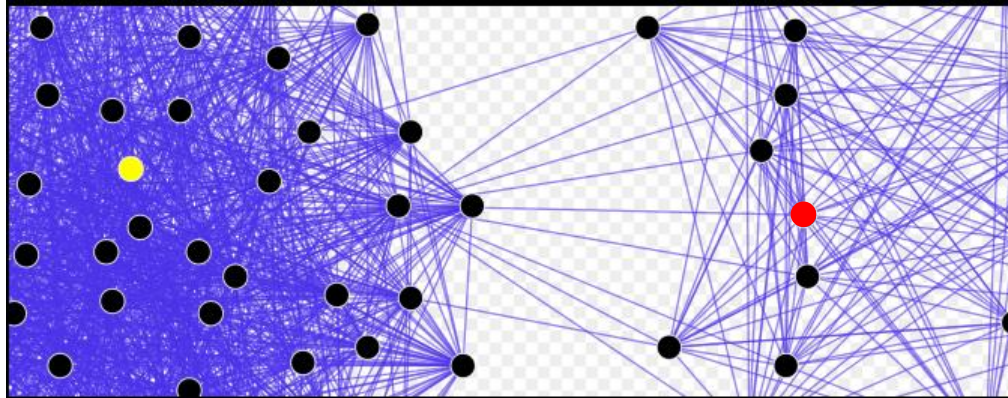
Initiatives

- **Institutional Repository**
 - Scholar@UC scholar.uc.edu
- **Partnerships**
 - Library faculty/staff serve on UCIT Research and Development Committee
 - Possible Research Hub Concept - One-stop for research needs



Balancing Enterprise Solutions and Individuals' Needs and Perspective

Think Globally, Act Locally... and Globally



Oklahoma State University

- Institutional background
- Data needs assessment
- Action items:
 - Research Data Services
 - Coalition for Advancing Digital Research and Education



UNIVERSITY LIBRARIES

Research and
Learning Services

Oklahoma State University: Institutional Background

Oklahoma State University (OSU) has been classified as a research university with high research activity. The total student population at OSU's primary campus in Stillwater, Oklahoma is approximately 24,000, with an undergraduate population of approximately 20,000. Edmon Low Library is the primary library on campus and is used by undergraduates, graduates, and faculty.

The Research & Learning Services (RLS) division of the library includes an associate dean, ten librarians, six of which are liaisons, one is the director of the liaison program, two are directors of undergraduate/graduate student outreach, instruction and research respectively, and a First Year Experience Librarian. The division also includes an instructional developer and a faculty coordinator for Undergraduate Outreach as well as two graduate student assistants and an intern.



UNIVERSITY LIBRARIES

Research and
Learning Services

Oklahoma State University: Data needs assessment

Worked with OSU's office of Institutional Research and Planning to identify new and tenure-track faculty who had not yet achieved tenure, which was a total of 259 members. We interviewed 31, or 12% of the total number who could have responded to our invitation. They were from the following departments/colleges: Business, Construction Management, Design, Housing and Merchandising, Engineering, Entomology, Geology, History, Sociology, Zoology. We obtained IRB approval to contact all new and tenure-track faculty in order to schedule individualized interviews. Our research goals were as follows:

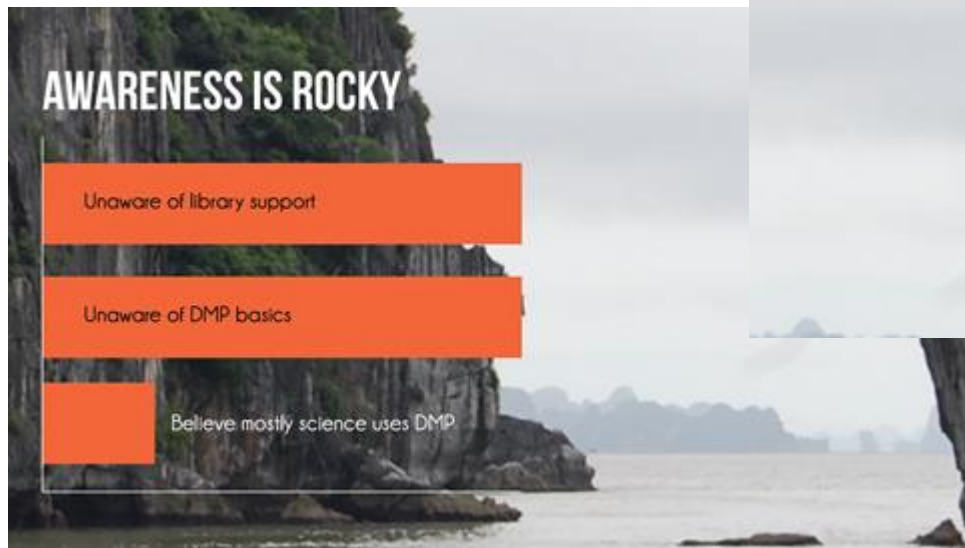
1. What are faculty needs for research data support relating to data management plans, data analysis and storage, data information literacy, and research impact?
2. What is the library's role in providing some or all of those services and resources?
3. Who else on campus is offering similar services and how can we create partnerships?
4. What training do librarians themselves need in order to provide quality services to support these needs?



UNIVERSITY LIBRARIES

Research and
Learning Services

Oklahoma State University: Data needs assessment



UNIVERSITY LIBRARIES

Research and
Learning Services

Oklahoma State University: Data needs assessment

WHAT DO WE DO WITH A SEA OF DATA?

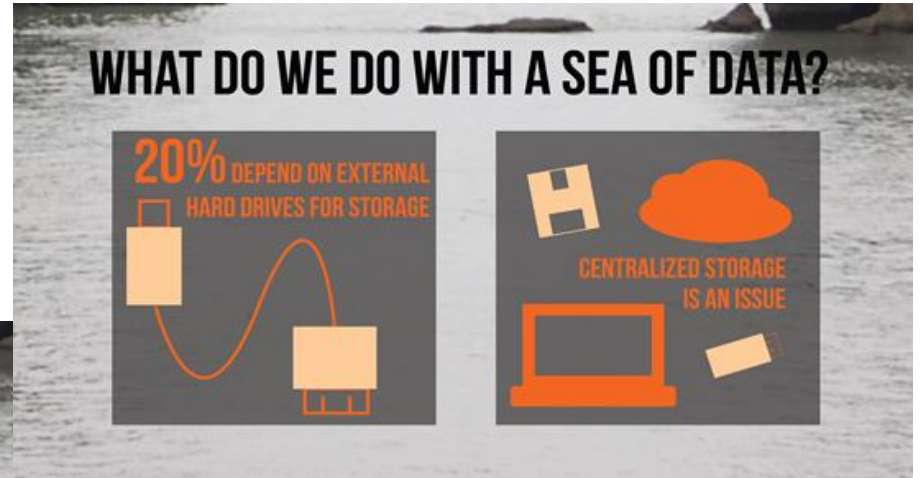


DATA TYPES ADD COMPLEXITY

METADATA BASICS & ORGANIZATION STANDARDS ARE LACKING

This infographic features two dark grey panels with orange icons. The left panel, titled 'DATA TYPES ADD COMPLEXITY', shows icons for a document, a video player, and a photo. The right panel, titled 'METADATA BASICS & ORGANIZATION STANDARDS ARE LACKING', shows icons for a magnifying glass, a folder, and a tag.

WHAT DO WE DO WITH A SEA OF DATA?



20% DEPEND ON EXTERNAL HARD DRIVES FOR STORAGE

CENTRALIZED STORAGE IS AN ISSUE

This infographic features two dark grey panels with orange icons. The left panel, titled '20% DEPEND ON EXTERNAL HARD DRIVES FOR STORAGE', shows a hard drive icon connected to a laptop icon by a wavy line. The right panel, titled 'CENTRALIZED STORAGE IS AN ISSUE', shows icons for a floppy disk, a cloud, a laptop, and a USB drive.



UNIVERSITY LIBRARIES

Research and
Learning Services

Oklahoma State University: Action Items

Research Data Services:

- Web presence: <http://www.library.okstate.edu/research-support/research-data-services/>
- On-demand workshops: <http://info.library.okstate.edu/workshops>
- Data information literacy training for graduate students
- Faculty pilot to deposit data sets into our institutional repository, ShareOK:
<https://www.library.okstate.edu/collections/digital-collections/shareok/>
- Standardized lesson plans for the workshops that we are holding with various departments on data management planning and research impact to standardize the co
<http://info.library.okstate.edu/c.php?g=401548>



UNIVERSITY LIBRARIES

Research and
Learning Services

Oklahoma State University: Action items

Create a campus-wide research data committee that would engage campus partners in the following activities:

- Consulting and access to a referral network both within the libraries and across the university of dedicated experts
- Centralize research data services and resources
- Offer workshops and training
- Ongoing researcher engagement and needs assessment
- Define cyberinfrastructure planning and support
- Offer programming and events such as a data forum



UNIVERSITY LIBRARIES

Research and
Learning Services

Best practice tips

1. Find champions and collaborators
2. Can't get in to see the VP? Meet with those who report to him/her
3. Try a needs assessment not only to gather information, but publicize services as well
4. Start small and pilot before making a bigger move



UNIVERSITY LIBRARIES

Research and
Learning Services

Thank you!

Questions?

Contact information:

1. cinthya.ippoliti@okstate.edu
2. rjulian@fsu.edu
3. KOSHOFAE@UCMAIL.UC.EDU



UNIVERSITY LIBRARIES

Research and
Learning Services